

TM

# Alfresco<sup>TM</sup>

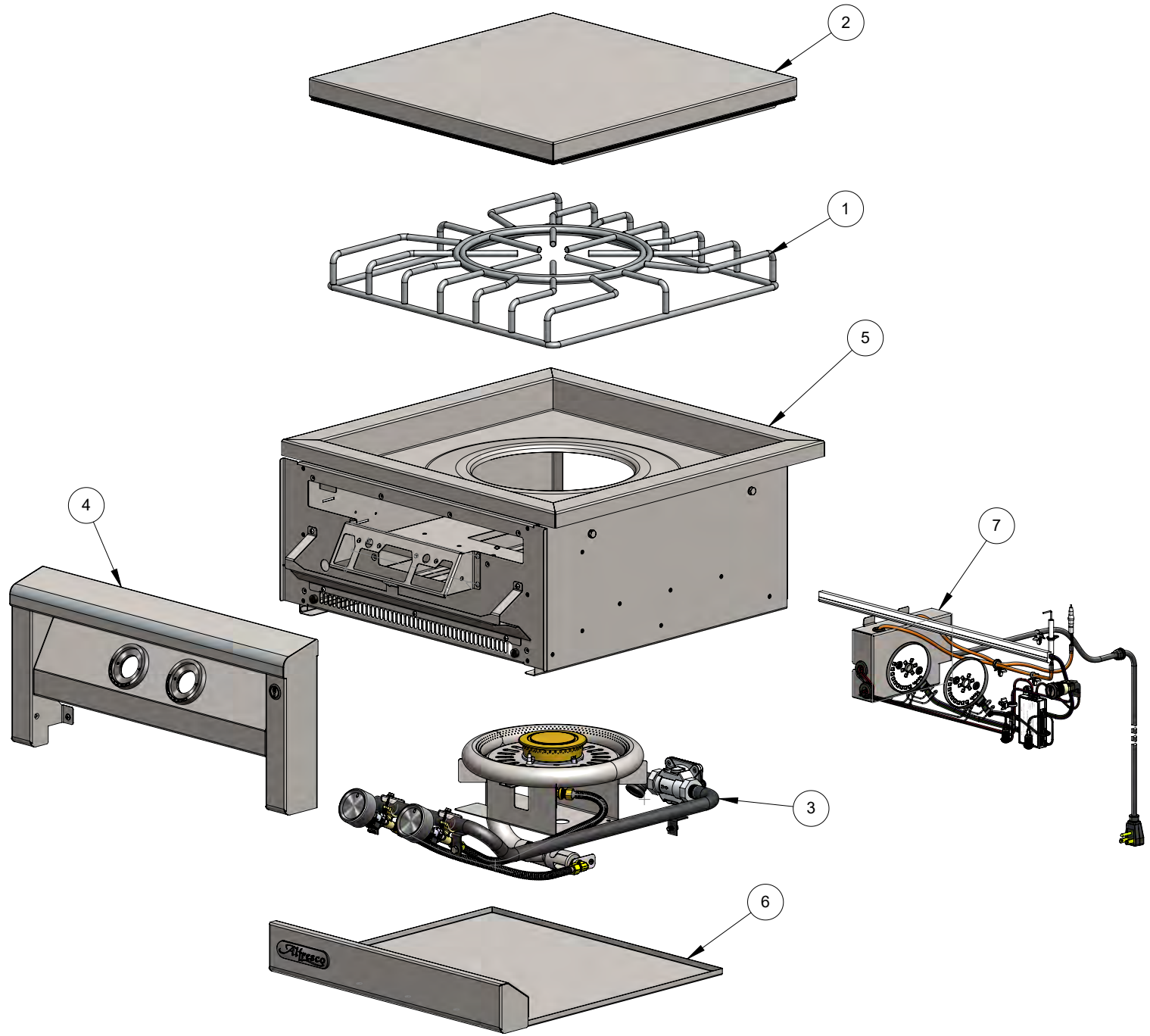
Open Air Culinary Systems



**AIPGVP PARTS MANUAL**

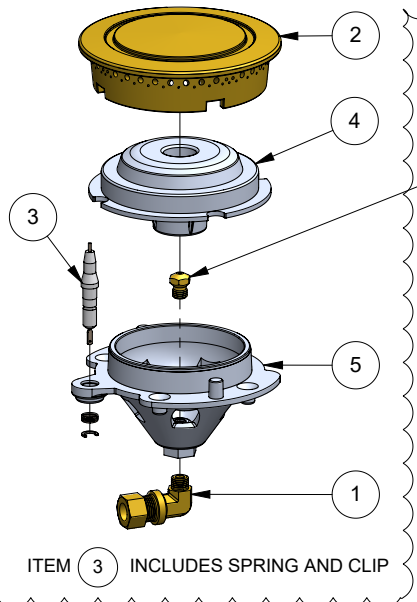
**BILL OF MATERIAL**

NO.	PART #	DESCRIPTION	QTY
1	510-0385	GRATE ASSEMBLY - POT & WOK USE	1
2	510-0387	COVER	1
3	510-1440	PIPING ASSEMBLY	1
4	510-1441	FRONT PANEL ASSEMBLY	1
5	510-1443	MAIN BODY ASSEMBLY	1
6	510-1445	GREASE TRAY ASSEMBLY	1
7	510-1447	ELECTRICAL ASSEMBLY	1



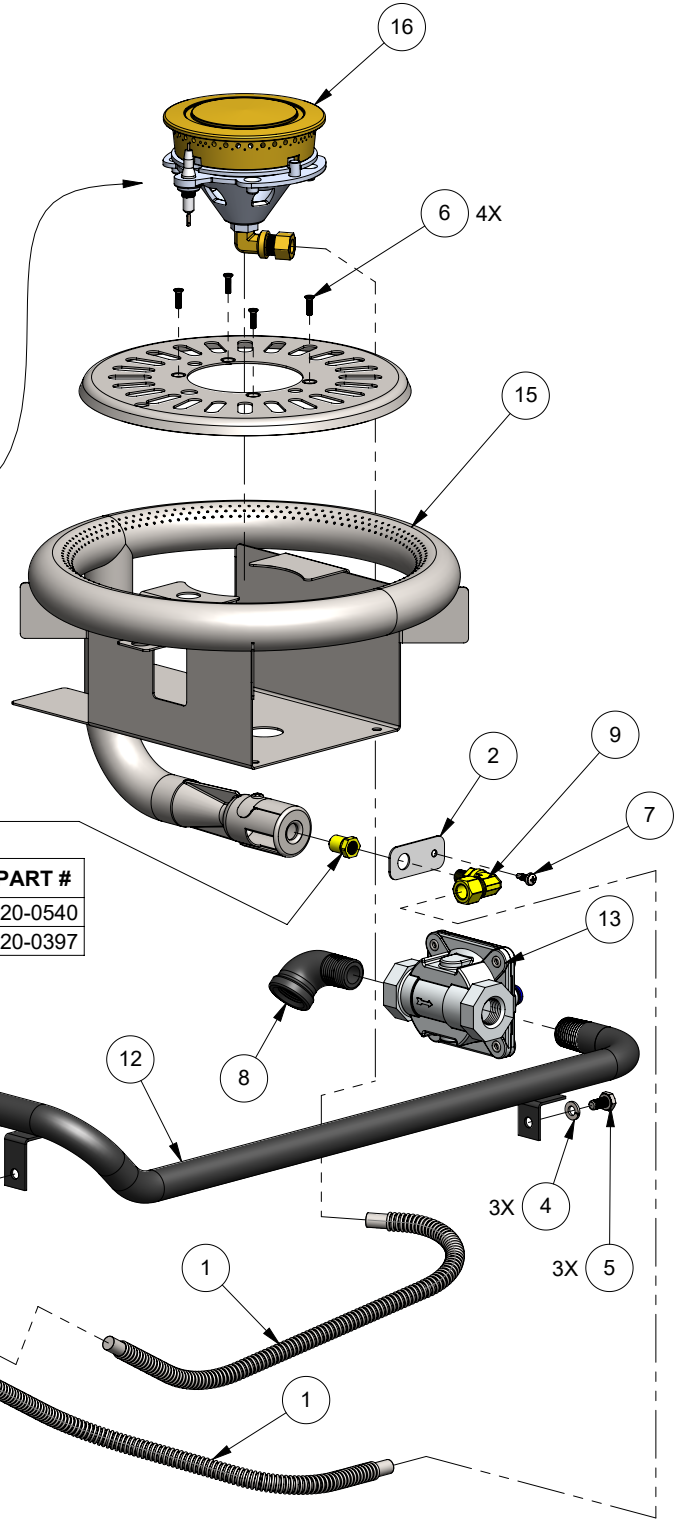
NO.	PART #	DESCRIPTION	QTY
1	100-0967	GAS LINE 3/8 X 16 - FLEX - SS	2
2	100-1067	SMOKER & SZ™ ORIFICE BRACKET	1
3	100-1478	TOP DECK BURNER CAP	1
4	200-0087	WASHER, 1/4" - SPRING LOCK - SS	3
5	200-0089	BOLT - HEX HEAD 1/4-20 x 1/2" L	3
6	200-0098	SCREW 6-32 X 1/2" - FLAT HEAD 82° - PHILIPS	4
7	200-0111	SCREW, SMS, 8-18 X 1/2", PH, PAN, TEK, 410 SS	1
8	200-0274	ELBOW, STREET, 1/2" NPT X 1/2" NPT-F, BLACK IRON	1
9	220-0293	ELBOW, 3/8-27 UNS x M6-.75 INT x 3/8" COMP., BRASS	1
10	220-0438	COUPLING, 1/8-27 NPT-Female X 3/8" COMP., BRASS	2
11	220-0510	GAS VALVE ASSEMBLY	2
12	220-0511	GAS MANIFOLD	1
13	220-0555	REGULATOR GAS - LOW TEMP - 4/10" W.C. CONV.	1
14	290-0526	KNOB ASSEMBLY	2
15	510-0383	AGVPC - RING BURNER ASSEMBLY	1
16	SEE NOTE	AGVPC - CENTER BURNER ASSEMBLY	1
17	SEE NOTE	AGVPC PERIMETER BURNER NOZZLE ORIFICE	1

BILL OF MATERIAL			
NO.	PART #	DESCRIPTION	QTY
1	220-0293	ELBOW, 1/8 NPT x 3/8" COMP, BRASS	1
2	290-0072	SIDE BURNER - EXTERIOR CAP	1
3	290-0074	ELECTRODE ASSEMBLY	1
4	290-0222	SIDE BURNER - INNER CAP	1
5	290-0344	SIDE BURNER BODY	1
6	SEE NOTE	SIDE BURNER ORIFICE	1



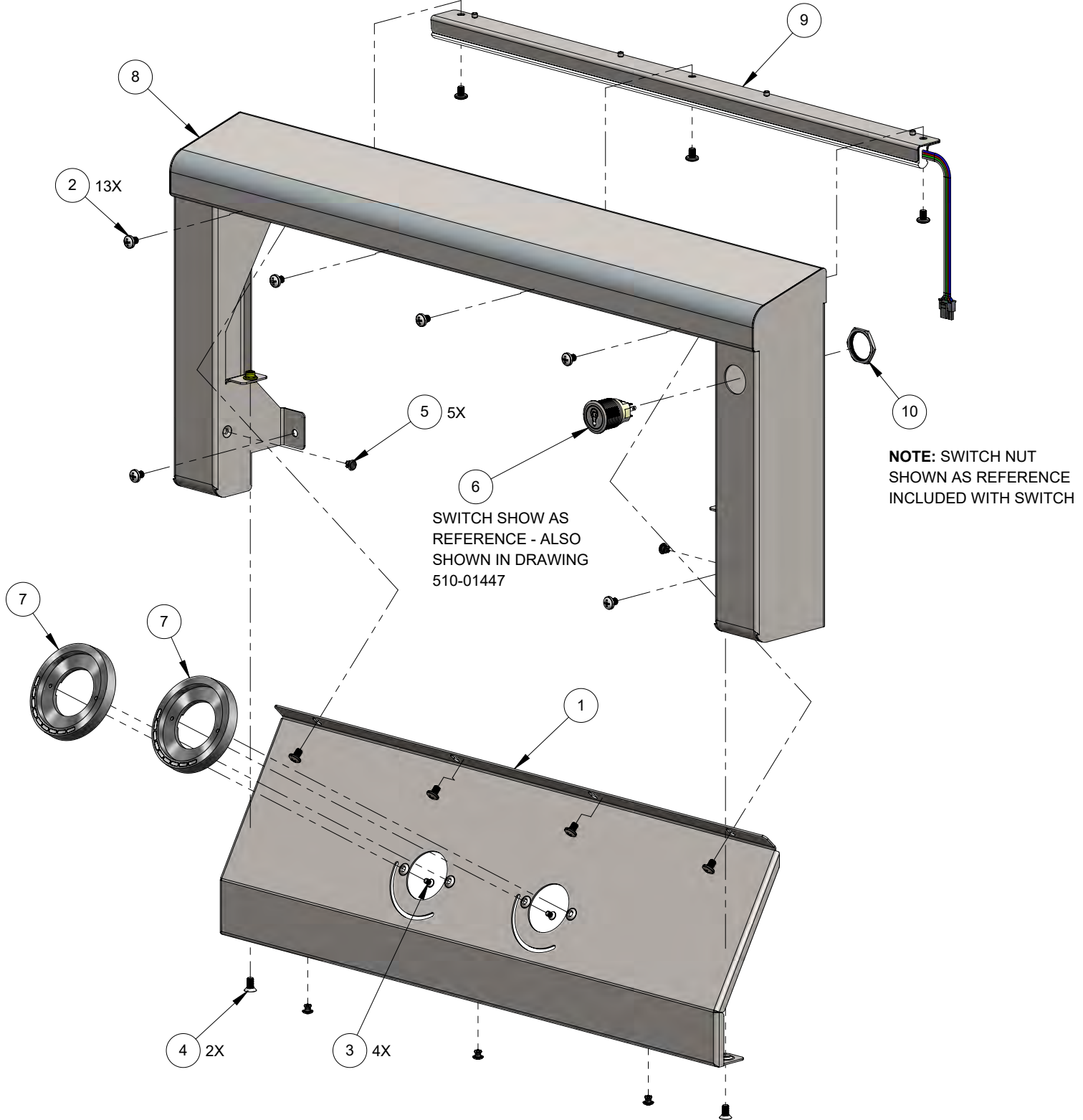
FUEL	SIZE	PART #
NG	43	220-0769
LP	54	220-0494

FUEL	SIZE	PART #
NG	30	220-0540
LP	50	220-0397



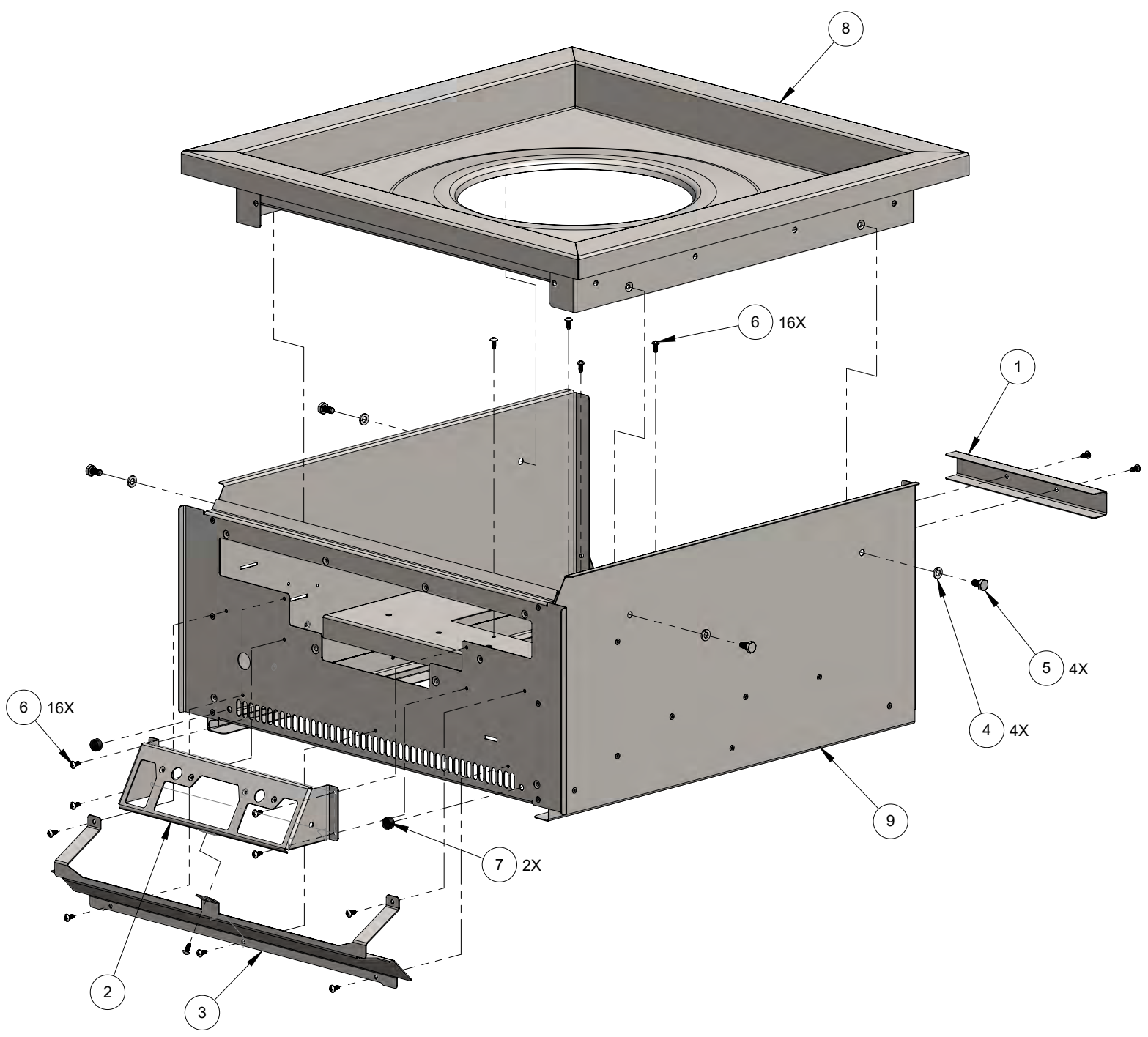
**BILL OF MATERIAL**

NO.	PART #	DESCRIPTION	QTY
1	100-3415	FRONT PANEL - CONTROL PANEL	1
2	200-0082	SCREW, MACH, 10-32 x 1/4", PH, PAN, SS	13
3	200-0425	SCREW 6-32 x 1/4"L - FLAT HEAD 82° UNDERCUT - PHILIPS	4
4	200-0436	SCREW, MACH, 10-32 X 3/8", PH, FLT, UNDERCUT, SS	2
5	200-0445	SNAP RIVET, Ø .161" MOUNT HOLE, NYLON 6, BLACK	5
6	210-0711	SWITCH - LIGHT - ON/OFF	1
7	290-0527	KNOB BEZEL ASSEMBLY	2
8	510-1442	FRONT PANEL WELDED PARTS	1
9	510-1446	FRONT PANEL LIGHT ASSEMBLY	1
10	SEE NOTE	SWITCH NUT (PROVIDED WITH SWITCH)	1



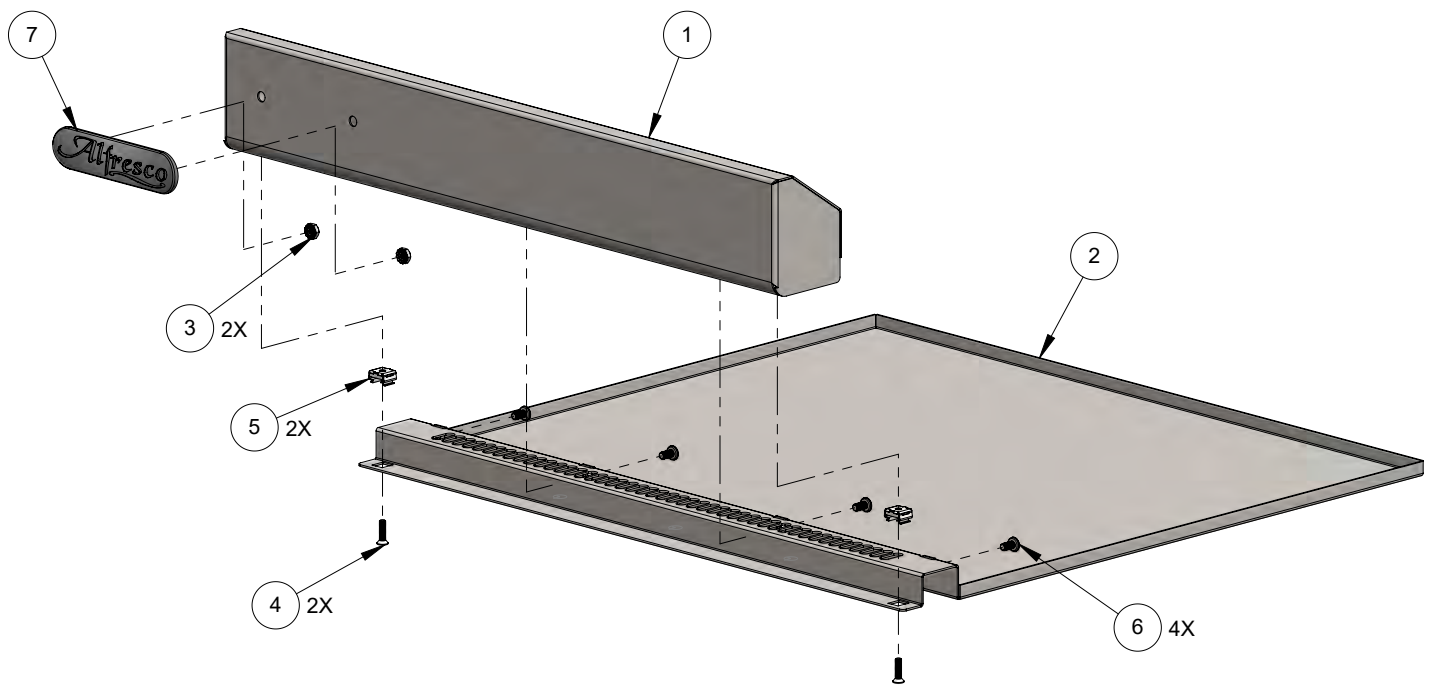
**BILL OF MATERIAL**

NO.	PART #	DESCRIPTION	QTY
1	100-2980	RING BURNER SUPPORT PLATE (B)	1
2	100-3405	ELECTRONICS BRACKET	1
3	100-3417	FRONT PANEL - WIRE COVER	1
4	200-0087	WASHER, 1/4" - SPRING LOCK - SS	4
5	200-0089	BOLT - HEX HEAD 1/4-20 x 1/2" L	4
6	200-0347	SCREW, SMS, 8-32 x 3/8", PH, PAN, TYPE F, 410 SS	16
7	290-0078	BUMPER 1/2"Ø X 1/4" PROJ. X 1/4" STEM	2
8	510-1145	TOP BODY ASSEMBLY	1
9	510-1444	BOTTOM BODY SUBASSEMBLY	1



**BILL OF MATERIAL**

NO.	PART #	DESCRIPTION	QTY
1	145-0611	FRONT, GREASE TRAY, AIPGV	1
2	145-0612	PAN, GREAY TRAY, AIPGV	1
3	200-0238	NUT, KEPS, #10-32 UNF, 304SS	2
4	200-0361	SCREW 8-32 X 5/8" - FLAT HEAD 82° - PHILLIPS	2
5	200-0465	NUT, CAGE, #8-32, ZN	2
6	200-0469	SCREW, MACH, 10-32 x 3/8", PH, PAN, SS	4
7	290-0489	ALFRESCO RANGE LOGO	1



**BILL OF MATERIAL**

NO.	PART #	DESCRIPTION	QTY
1	100-3419	ELECTRICAL BOX	1
2	200-0004	GROMMET 9/16" OD, 1/16" MAT'L, 7/16" ID	2
3	200-0005	GROMMET Ø1/2"	2
4	200-0009	STRAIN RELIEF, Ø.625 MOUNT HOLE X .062 THK., NYLON 6/6	2
5	200-0199	SCREW 6-32 x 1/4 - PAN HEAD CROSS - SS	5
6	200-0270	SCREW 8-32 X 1/2 - PAN HEAD PHILIPS - 304 SS	1
7	200-0320	SCREW 8-32 X 3/8", HEX HD FLNG, TYPE F, GREEN CHRMT	1
8	200-0347	SCREW, SMS, 8-32 x 3/8", PH, PAN, TYPE F, 410 SS	5
9	210-0248	SIDE BURNER ELECTRODE A1202-E	1
10	210-0258	CABLE TIE - T&B L-5-50PM-9	3
11	210-0258	CABLE TIE - T&B L-5-50PM-9	1
12	210-0309	IGNITER WIRE KIT	1
13	210-0498	ELECTRODE "L" SHAPED - AGVPC RING BURNER	1
14	210-0499	CABLE 115/120V 10A 18/3 SJTOW - 96"- 90° PLUG NEMA 5-15	1
15	210-0711	SWITCH - LIGHT - ON/OFF	1
16	210-0726	BRIGHTNESS / ON / OFF TOGGLE SWITCH	1
17	210-0753	COLOR TOGGLE SWITCH	1
18	210-0756	SWITCH RECEPTABLE - AIPGVP / AIPGSB-2	1
19	210-0764	NEON LED STRIP	1
20	210-0781	RGB LED CONTROLLER	1
21	210-0789	IGNITION WIRE - 1/8" FEMALE SPADE CONNECTOR	1
22	210-0789	IGNITION WIRE - 1/8" FEMALE SPADE CONNECTOR	1
23	210-0823	KNOB LED HARNESS - 5W - 12"	1
24	210-0823	KNOB LED HARNESS - 5W - 12"	1
25	210-0838	IGNITION MODULE, SINGLE POINT	2
26	210-0900	LED DRIVER - 12 VDC - 36W	1
27	210-0940	AIPGVP & AIPGSB-2 WIRING KIT	1
28	290-0528	KNOB LED ASSEMBLY	2
29	SEE NOTE	SWITCH NUT (PROVIDED WITH SWITCH)	1

**NOTE: (NEON LED STRIP)**  
IS PART OF ASSEMBLY 510-1446 AS SHOWN  
ON DRAWING 510-1441

