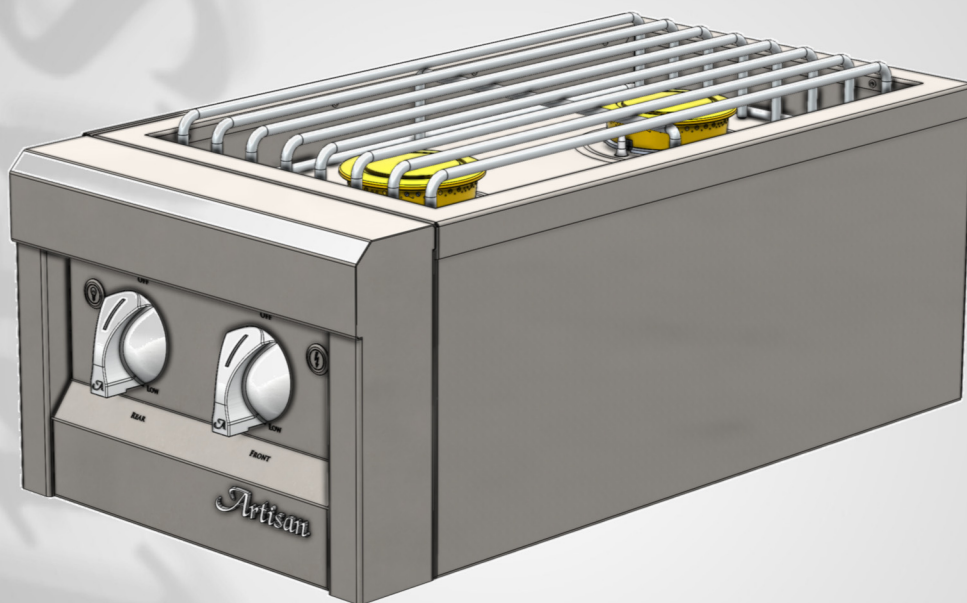


# Artisan™

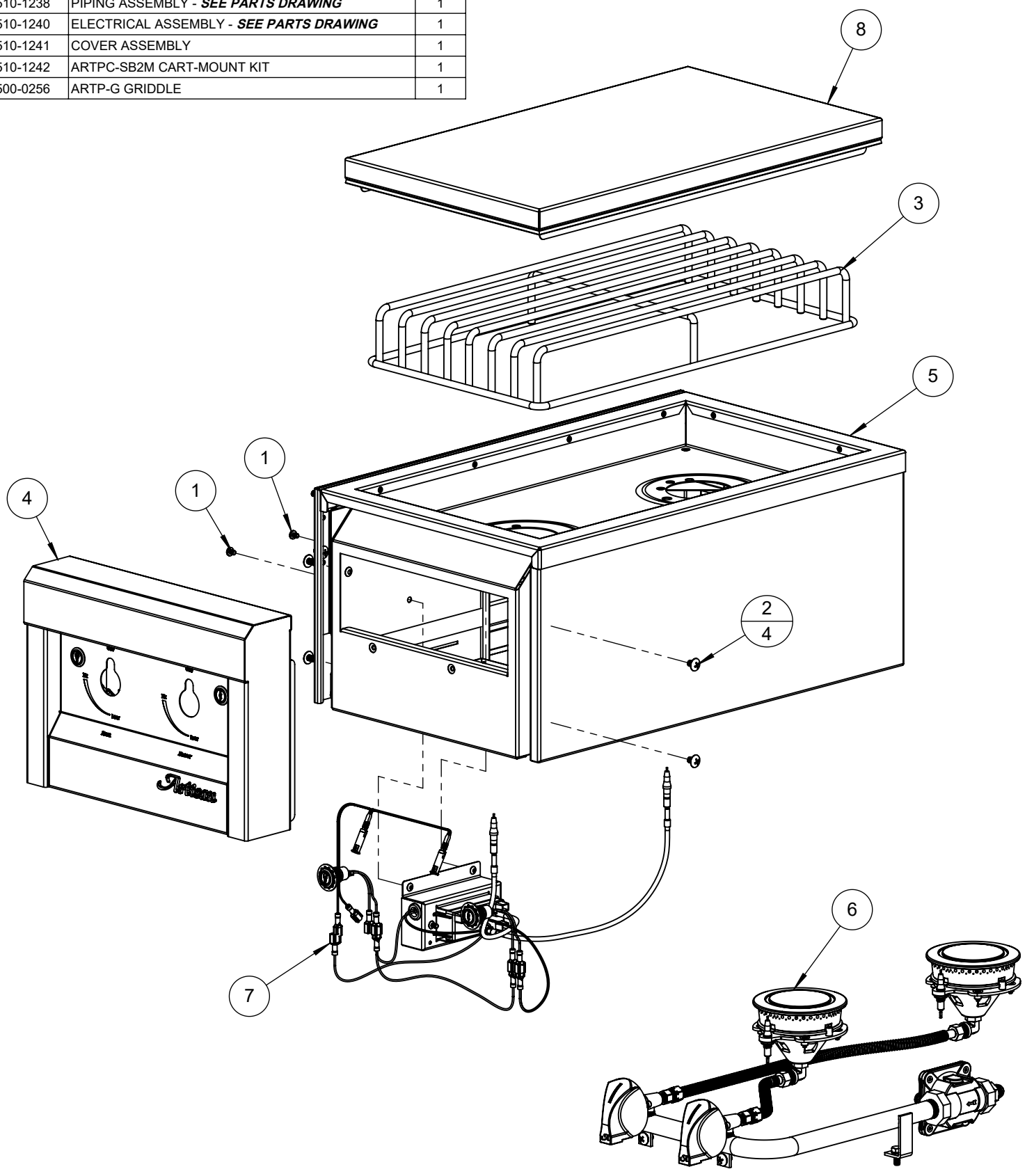
Professional Grills by Alfresco



**PARTS MANUAL**  
**ARTP-SB2 MODEL**  
**SN 25-134000 FORWARD**

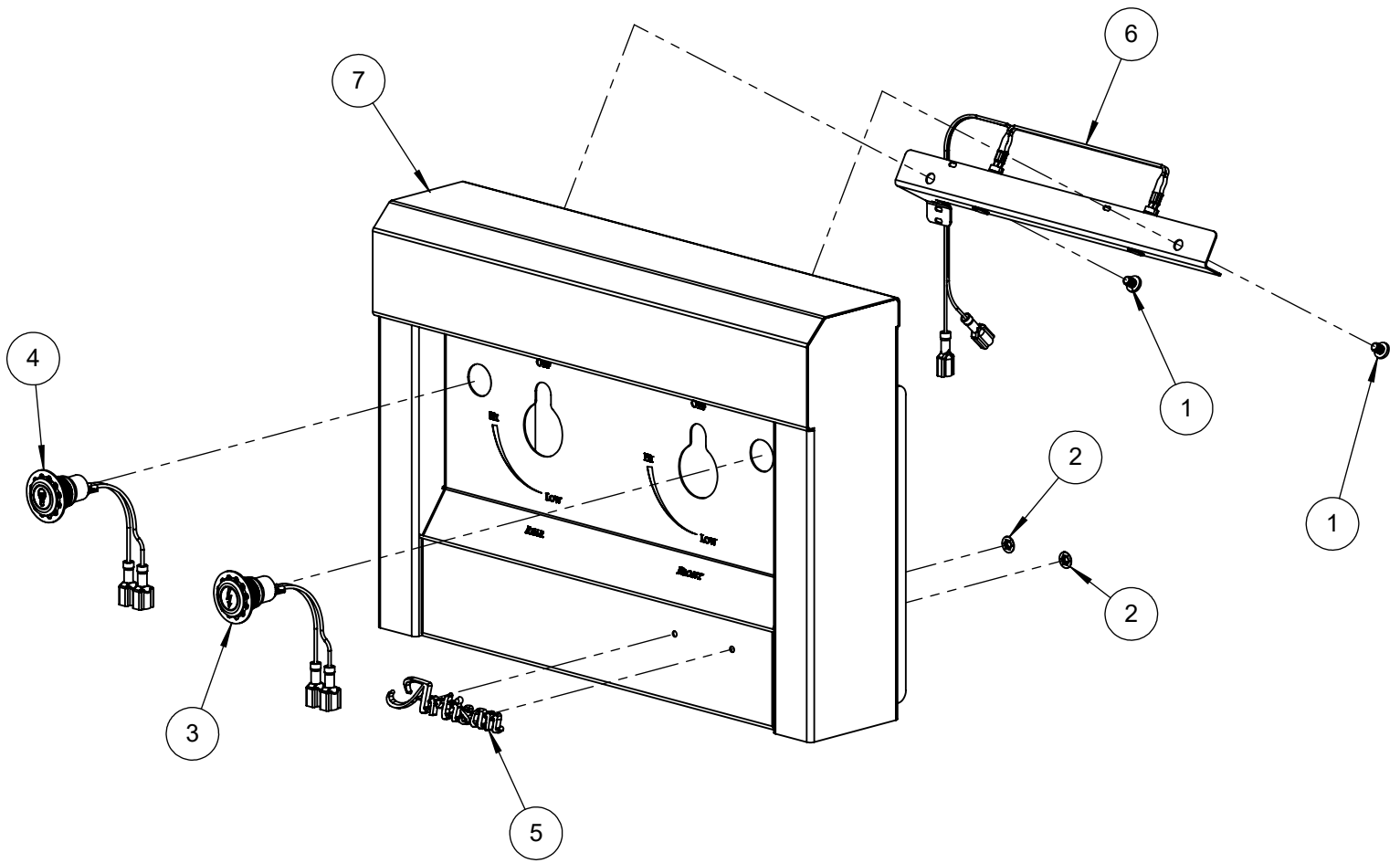
**BILL OF MATERIALS**

NO.	PART #	DESCRIPTION	QTY.
1	200-0082	10-32 X 1/4 - PAN HEAD - PHILIPS SCREW	2
2	200-0086	SCREW 1/4-20 X 3/8: - TRUSS HEAD PHILIPS	4
3	290-0472	GRATE - DUAL SIDE BURNE	1
4	510-1236	FRONT PANEL ASSEMBLY - <i>SEE PARTS DRAWING</i>	1
5	510-1237	TOP ASSEMBLY	1
6	510-1238	PIPING ASSEMBLY - <i>SEE PARTS DRAWING</i>	1
7	510-1240	ELECTRICAL ASSEMBLY - <i>SEE PARTS DRAWING</i>	1
8	510-1241	COVER ASSEMBLY	1
9	510-1242	ARTPC-SB2M CART-MOUNT KIT	1
10	500-0256	ARTP-G GRIDDLE	1



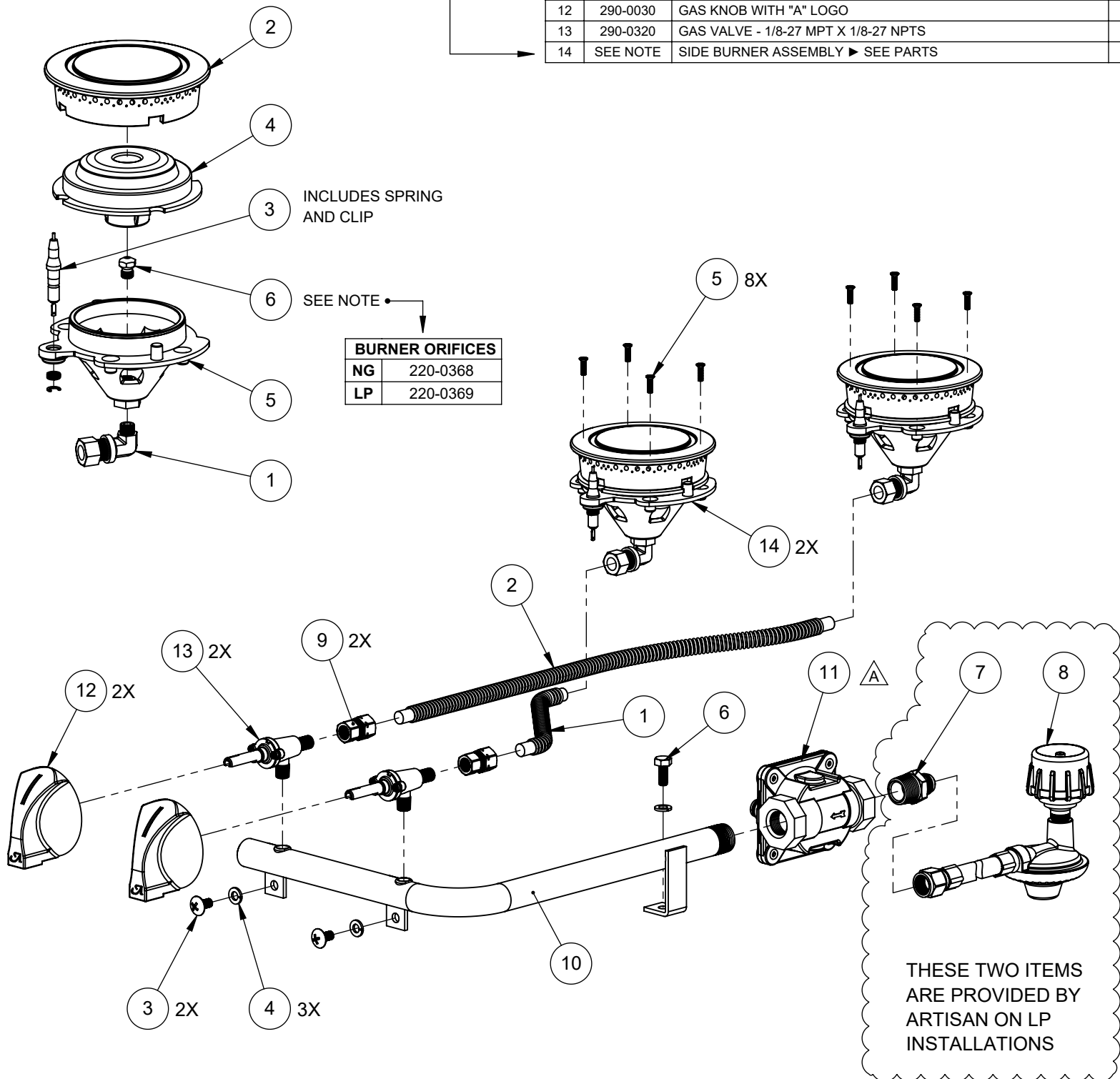
BILL OF MATERIAL			
NO.	PART #	DESCRIPTION	QTY.
1	200-0082	10-32 X 1/4 - PAN HEAD - PHILIPS SCREW	2
2	200-0093	WASHER - PUSH LOCK 1/8" ID X 3/8" OD (LOGO)	2
3	210-0583	SWITCH - IGNITION - MOMENTARY [ON]/OFF	1
4	210-0584	SWITCH - LIGHT - LATCHING [ON/OFF]	1
5	290-0356	ARTISAN LOGO	1
6	510-1239	LIGHT ASSEMBLY - <i>SEE PARTS IN ASSEMBLY 510-1240 M1</i>	1
7	510-1245	FRONT ASSEMBLY - WELDED PARTS	1

FOR REFERENCE ONLY SEE PARTS IN ELECTRICAL ASSEMBLY 510-1240 M1



BILL OF MATERIALS - SIDE BURNER ONLY			
NO.	PART #	DESCRIPTION	QTY
1	220-0293	ELBOW, 1/8 NPT x 3/8" COMP, BRASS	1
2	290-0072	SIDE BURNER - EXTERIOR CAP	1
3	290-0074	ELECTRODE ASSEMBLY	1
4	290-0222	SIDE BURNER - INNER CAP	1
5	290-0344	SIDE BURNER BODY	1
6	SEE NOTE	SIDE BURNER ORIFICE	1

BILL OF MATERIALS - PIPING ASSEMBLY			
NO.	PART #	DESCRIPTION	QTY
1	100-0917	3/8" Ø X 8" FLEX GAS LINE	1
2	100-0941	3/8" Ø X 24" FLEX GAS LINE	1
3	200-0057	SCRW 1/4-20 X 1/2" - TRUSS HEAD PHILIPS	2
4	200-0087	WASHER, 1/4" - SPRING LOCK - SS	3
5	200-0098	SCREW 6-32 X 1/2" - FLAT HEAD 82° - PHILIPS	8
6	200-0219	SCREW 1/4-20 UNC X 5/8 LONG - HEX HD - SS	1
7	220-0275	NIPPLE, 1/2" NPT X 3/8" OD 45° FLARE, BRASS	1
8	220-0430	REGULATOR - SINGLE STAGE- LP GAS W/ 3/6" HOSE - 90° - BLACK	1
9	220-0438	COUPLING, 1/8-27 NPT-Female X 3/8" COMP., BRASS	2
10	220-0487	GAS MANIFOLD - DUAL BURNER	1
11	220-0555	REGULATOR GAS - LOW TEMP - 4/10" W.C. CONV.	1
12	290-0030	GAS KNOB WITH "A" LOGO	2
13	290-0320	GAS VALVE - 1/8-27 MPT X 1/8-27 NPTS	2
14	SEE NOTE	SIDE BURNER ASSEMBLY ▶ SEE PARTS	2



REVISIONS			
REV.	DESCRIPTION	DATE	BY
A	UPDATED LOW TEMPERATURE AND ASSOCIATED COMPONENTS	3/12/2026	AEC

**Artisan™**  
 SUPERIOR EQUIPMENT SOLUTIONS  
 1085 BIXBY DRIVE  
 CITY OF INDUSTRY, CA. 91745

THE INFORMATION CONTAINED IN THIS DRAWING IS THE SOLE PROPERTY OF SUPERIOR EQUIPMENT SOLUTIONS INC. ANY REPRODUCTION IN PART OR AS A WHOLE WITHOUT WRITTEN PERMISSION FROM SUPERIOR EQUIPMENT SOLUTIONS, INC. IS PROHIBITED.

**DRAWN BY: ADRIAN CRISCI**  
**LAST SAVED: 3/12/2026 9:51:44 AM**

PROJECT TITLE:  
**PIPING ASSEMBLY**

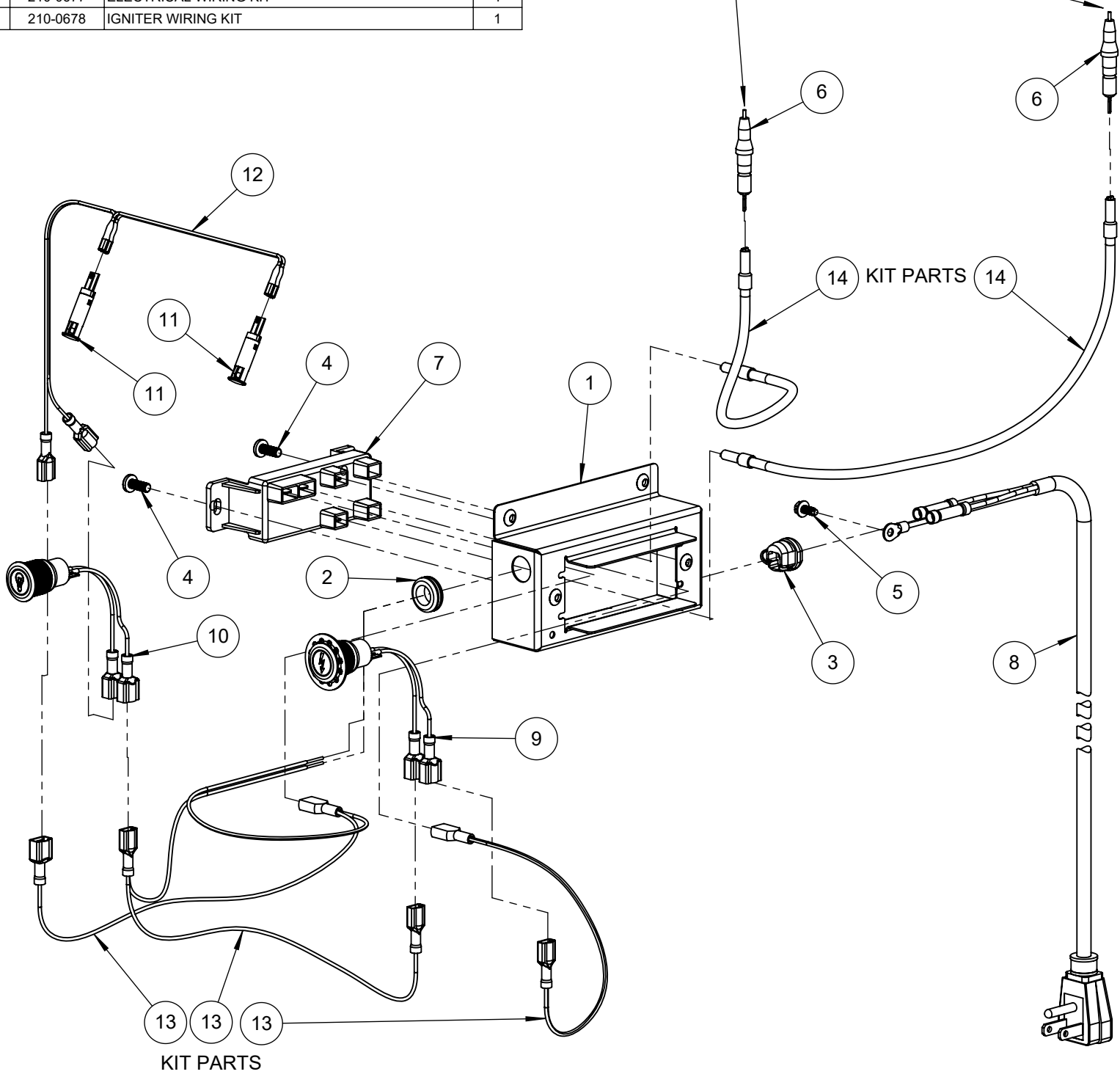
DRAWING NO.:  
**510-1238 M1**

SHEET 1 OF 1

**BILL OF MATERIALS**

NO.	PART #	DESCRIPTION	QTY
1	100-3082	J-BOX	1
2	200-0004	GROMMET 9/16" OD, 1/16" MAT'L, 7/16" ID	1
3	200-0009	HEYCO STRESS RELIEF BUSHING # 1200 SR 6N3-4	1
4	200-0267	10-32 X 1/2 - PAN HEAD - PHILLIPS SCREW	2
5	200-0320	SCREW 8-32 x 3/8 - GROUNDING SCREW	1
6	210-0248	SIDE BURNER ELECTRODE A1202-E	2
7	210-0464	IGNITER MODULE (2 POINTS)	1
8	210-0499	NEMA 5-15 - 90° PLUG 18/3 EXTENSION CORD	1
9	210-0583	SWITCH - IGNITION - MOMENTARY [ON]/OFF	1
10	210-0584	SWITCH - LIGHT - LATCHING [ON/OFF]	1
11	210-0624	LIGHT - BLUE LED - 8mm Ø - 110 VAC	2
12	210-0675	LIGHT HARNESS	1
13	210-0677	ELECTRICAL WIRING KIT	1
14	210-0678	IGNITER WIRING KIT	1

ELECTRODES SHOWN AS REFERENCE PART OF PIPING ASSEMBLY 510-1238



*Artisan*<sup>™</sup>  
*Professional Grills by Alfresco*