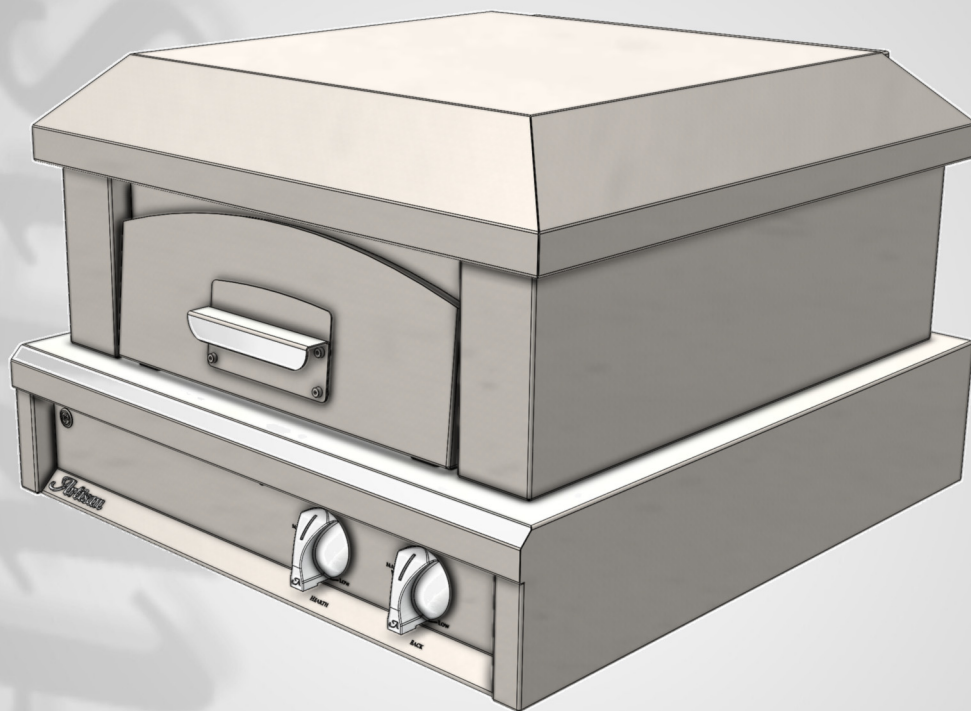


# Artisan™

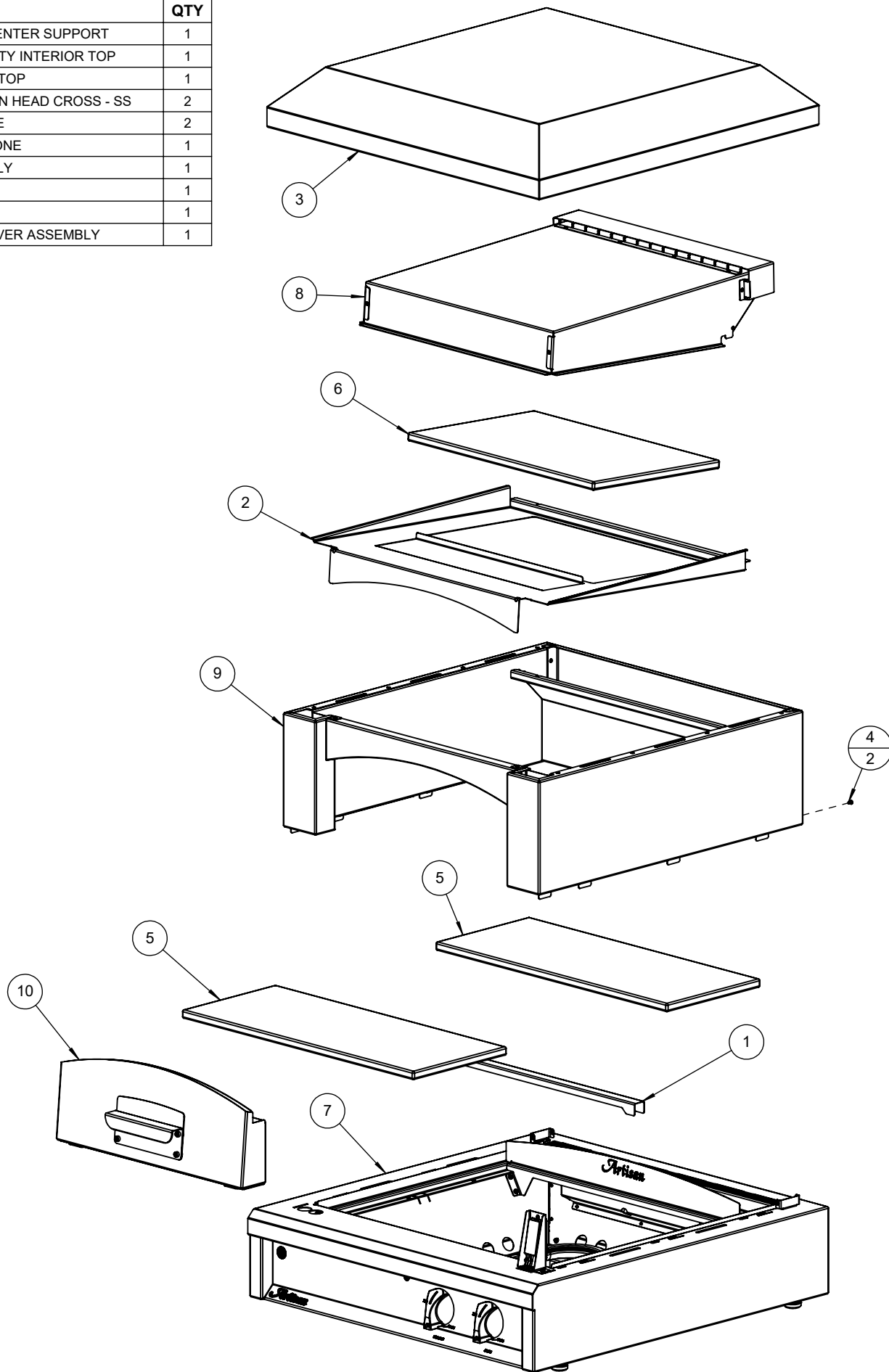
Professional Grills by Alfresco



***PARTS MANUAL***  
***ARTP-PZA MODEL***  
***SN 25-134000 FORWARD***

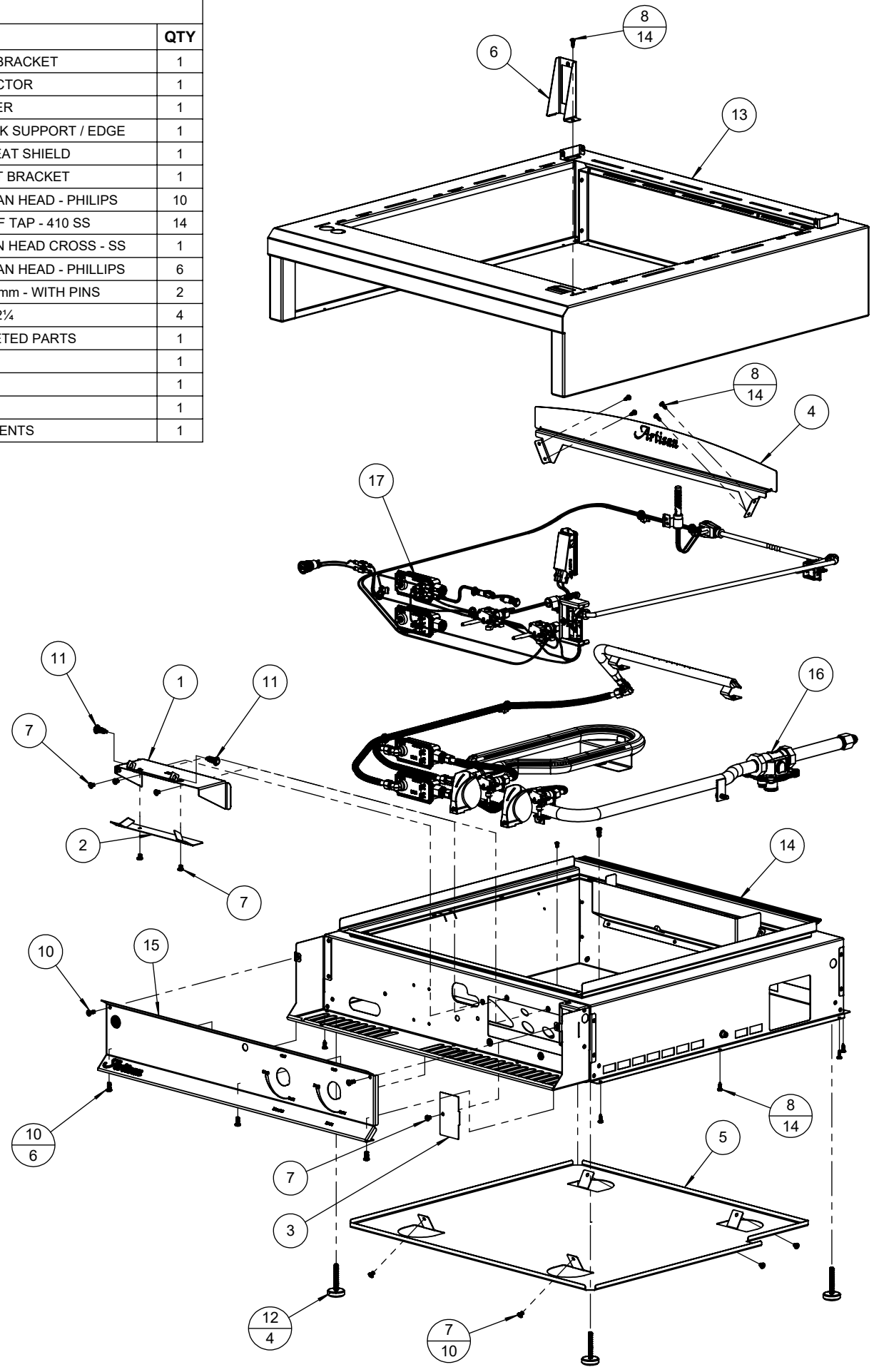
**BILL OF MATERIAL**

NO.	PART #	DESCRIPTION	QTY
1	100-3127	ARTP-PZA STONES CENTER SUPPORT	1
2	100-3137	ARTP-PZA OVEN CAVITY INTERIOR TOP	1
3	100-3140	ARTP-PZA EXTERIOR TOP	1
4	200-0199	SCREW 6-32 x 1/4 - PAN HEAD CROSS - SS	2
5	290-0366	BOTTOM PIZZA STONE	2
6	290-0367	TOP REFRACTIVE STONE	1
7	510-1260	BASE - MAIN ASSEMBLY	1
8	510-1266	OVEN EXHAUST	1
9	510-1267	OVEN CAVITY	1
10	510-1271	ARTP-PZA FRONT COVER ASSEMBLY	1



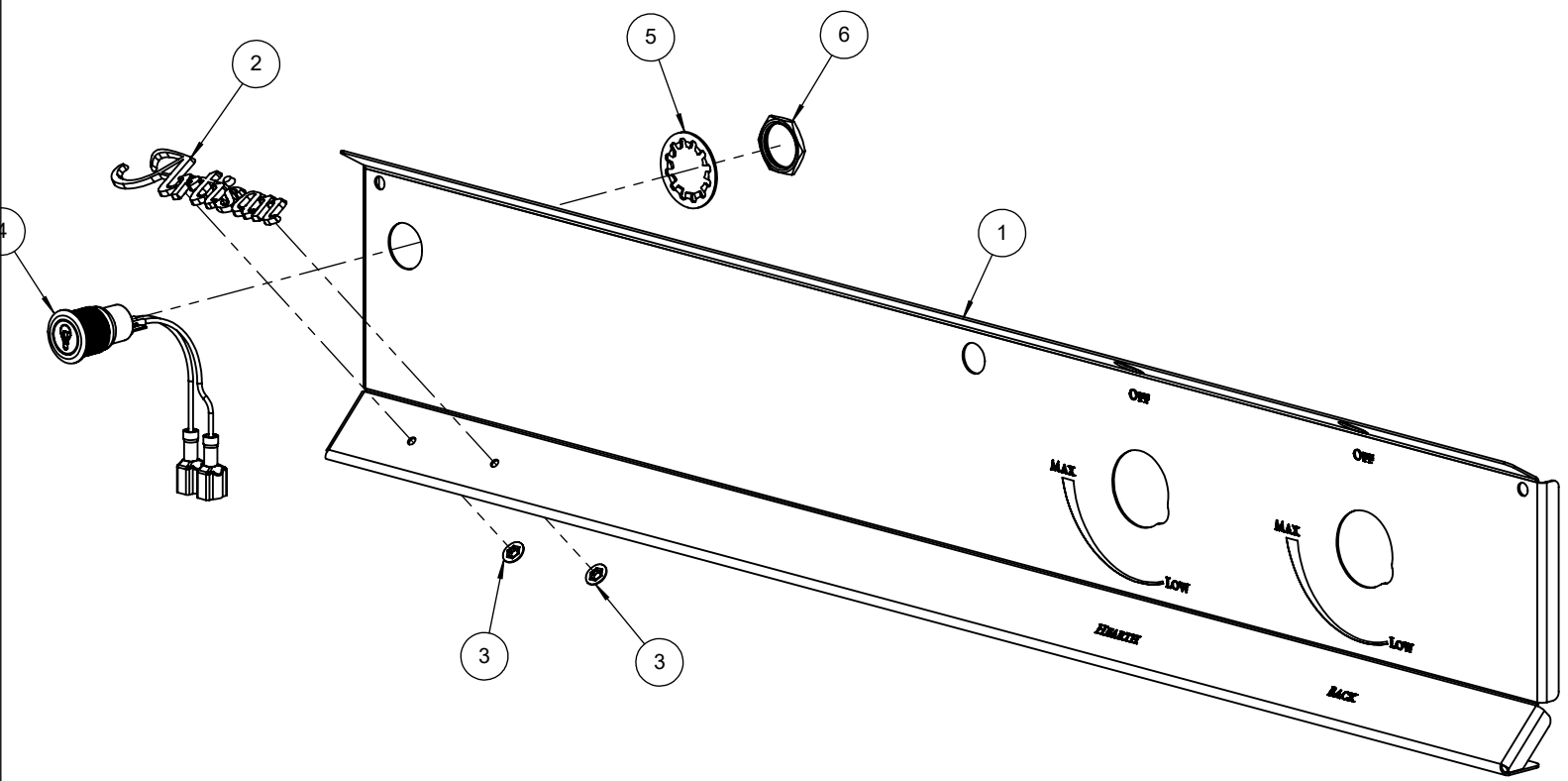
**BILL OF MATERIAL**

NO.	PART #	DESCRIPTION	QTY
1	100-3116	ARTP-PZA LED LIGHT BRACKET	1
2	100-3117	ARTP-PZA LED REFLECTOR	1
3	100-3119	ARTP-PZA J-BOX COVER	1
4	100-3122	ARTP-PZA STONE BACK SUPPORT / EDGE	1
5	100-3125	ARTP-PZA BOTTOM HEAT SHIELD	1
6	100-3126	ARTP-PZA OVEN LIGHT BRACKET	1
7	200-0082	SCREW 10-32 X 1/4 - PAN HEAD - PHILIPS	10
8	200-0111	SCREW 8-18 X 1/2 - SELF TAP - 410 SS	14
9	200-0199	SCREW 6-32 x 1/4 - PAN HEAD CROSS - SS	1
10	200-0267	SCREW 10-32 X 1/2 - PAN HEAD - PHILLIPS	6
11	210-0662	BLUE LED LIGHT - Ø 8 mm - WITH PINS	2
12	290-0362	LEVEL MOUNT 1/4-20 x 2 1/4	4
13	510-1261	BASE - OUTSIDE RIVETED PARTS	1
14	510-1262	BASE - INSIDE FRAME	1
15	510-1263	CONTROL PANEL	1
16	510-1264	MANIFOLD ASSEMBLY	1
17	510-1269	ELECTRICAL COMPONENTS	1



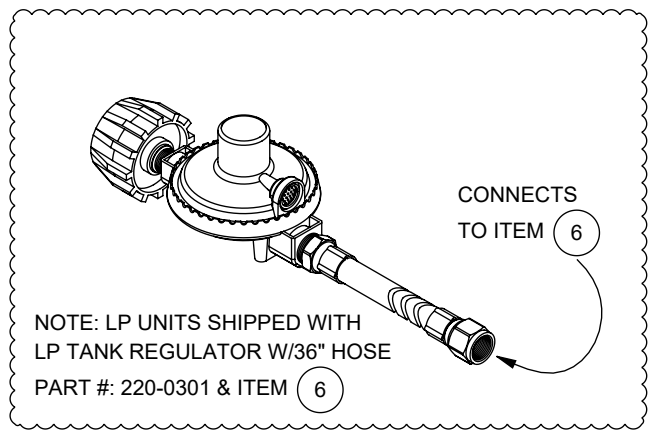
**BILL OF MATERIAL**

NO.	PART #	DESCRIPTION	QTY
1	100-3113	ARTP-PZA FRONT PANEL	1
2	290-0356	ARTISAN LOGO	1
3	200-0093	WASHER - PUSH LOCK 1/8" ID X 3/8" OD (LOGO)	2
4	210-0584	SWITCH - LIGHT - LATCHING [ON/OFF]	1
5	210-0581	WASHER - LOCK - Ø 19 mm - INTERNAL TEETH	1
6	210-0582	NUT - Ø 19 mm X 1	1

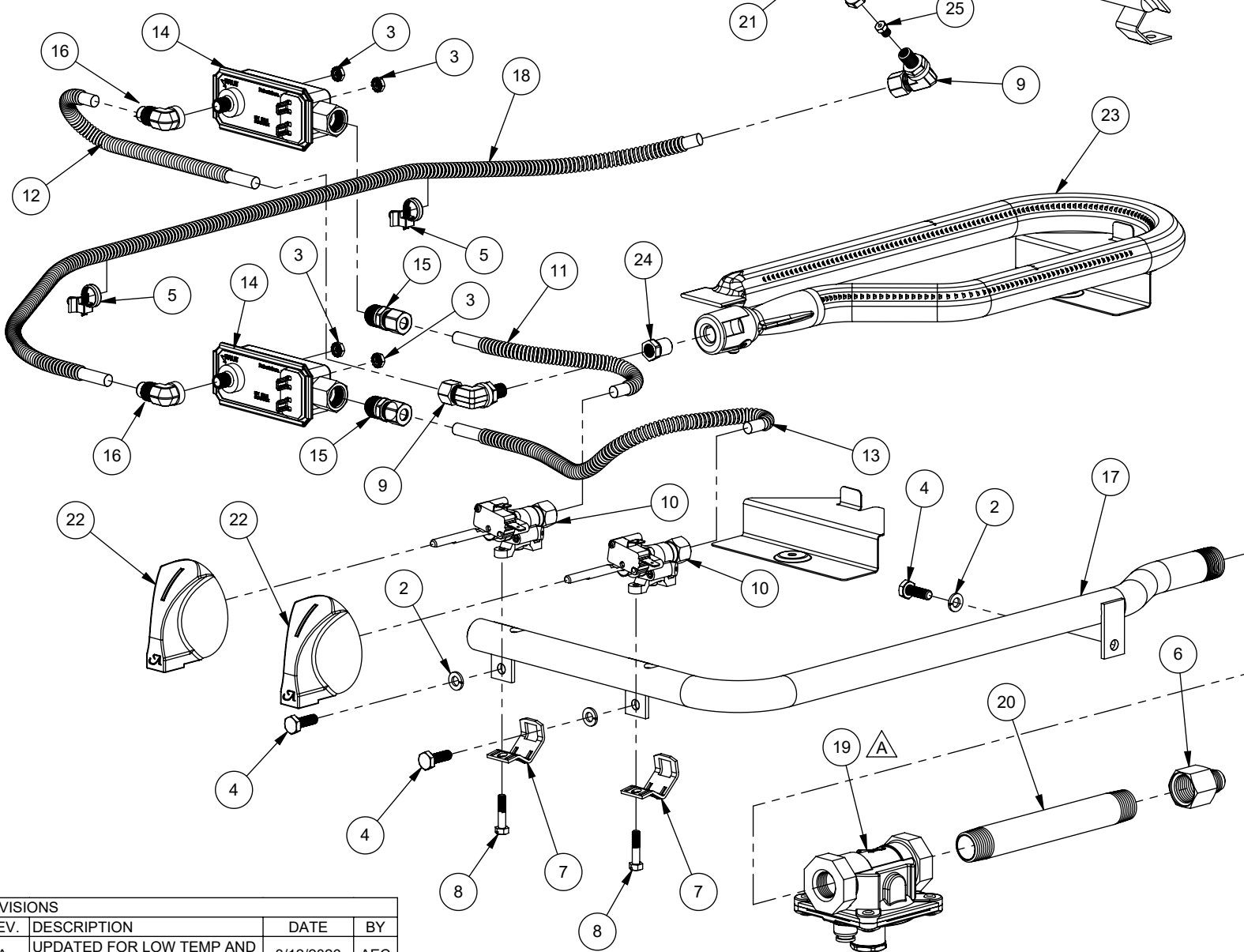


**BILL OF MATERIAL**

NO.	PART #	DESCRIPTION	QTY
1	100-3124	ARTP-PZA HEARTH BURNER SUPPORT	1
2	200-0087	WASHER, 1/4" - SPRING LOCK - SS	3
3	200-0206	NUT, KEPS, #8-32 UNF, 304SS	4
4	200-0242	BOLT 1/4-20 UNC x 3/4 - HEX HEAD - SS	3
5	210-0258	CABLE TIE - T&B L-5-50PM-9	2
6	220-0403	NIPPLE, 3/8" OD 45° FLARE x 1/2" NPT-F (FOR LP HOOK-UP)	1
7	220-0458	BRACKET - GAS VALVE SADDLE MOUNT	2
8	220-0459	SCREW, MACH, M5 X 26mm, POZI•COMB•HEX HEAD- 11.5 PT	2
9	220-0474	ELBOW, 3/8-27 UNS X M6-.75 INT. X 5/16 COMP., BRASS	2
10	220-0477	GAS VALVE - SINGLE PORT 5/16" Ø COMP W/ SWITCH	2
11	220-0478	GAS LINE - 5/16" Ø 8" L - SS - FLEX	1
12	220-0478	GAS LINE - 5/16" Ø 8" L - SS - FLEX	1
13	220-0480	GAS LINE - 5/16" Ø X 13" L - SS - FLEX	1
14	220-0483	SAFETY GAS VALVE	2
15	220-0485	REDUCER, 9/16-24 UNEF x 5/16" COMP., BRASS	2
16	220-0486	ELBOW, 5/16" COMP. X 3/8-27 UNS-2B, BRASS	2
17	220-0489	GAS MANIFOLD - ARTP-PZA	1
18	220-0491	GAS LINE - 5/16" Ø 36" L - SS - FLEX	1
19	220-0555	REGULATOR GAS - LOW TEMP - 4/10" W.C. CONV.	1
20	280-0176	NIPPLE, 1/2" NPT X 6", SCH-40, BLACK STEEL	1
21	290-0373	BACK BURNER	1
22	290-0496	GAS KNOB WITH "A" LOGO	2
23	290-0497	BOTTOM BURNER- 1Ø - 17.5" X 5" - WITH BRACKET	1
24	SEE NOTE	ORIFICE - BOTTOM BURNER	1
25	SEE NOTE	ORIFICE - REAR BURNER	1



FUEL ▶	NG	LP		
ITEM ▼	SIZE	NUMBER	SIZE	NUMBER
24	50	220-0397	57	220-0398
25	42	220-0492	55	220-0415



REV.	DESCRIPTION	DATE	BY
A	UPDATED FOR LOW TEMP AND ASSOCIATED COMPONENTS	3/12/2026	AEC

**Artisan™**  
 SUPERIOR EQUIPMENT SOLUTIONS  
 1085 BIXBY DRIVE  
 CITY OF INDUSTRY, CA. 91745

THE INFORMATION CONTAINED IN THIS DRAWING IS THE SOLE PROPERTY OF SUPERIOR EQUIPMENT SOLUTIONS INC. ANY REPRODUCTION IN PART OR AS A WHOLE WITHOUT WRITTEN PERMISSION FROM SUPERIOR EQUIPMENT SOLUTIONS, INC. IS PROHIBITED.

**DRAWN BY: ADRIAN CRISCI**  
**LAST SAVED: 3/12/2026 9:56:11 AM**

**PROJECT TITLE:**  
**ARTP-PZA**

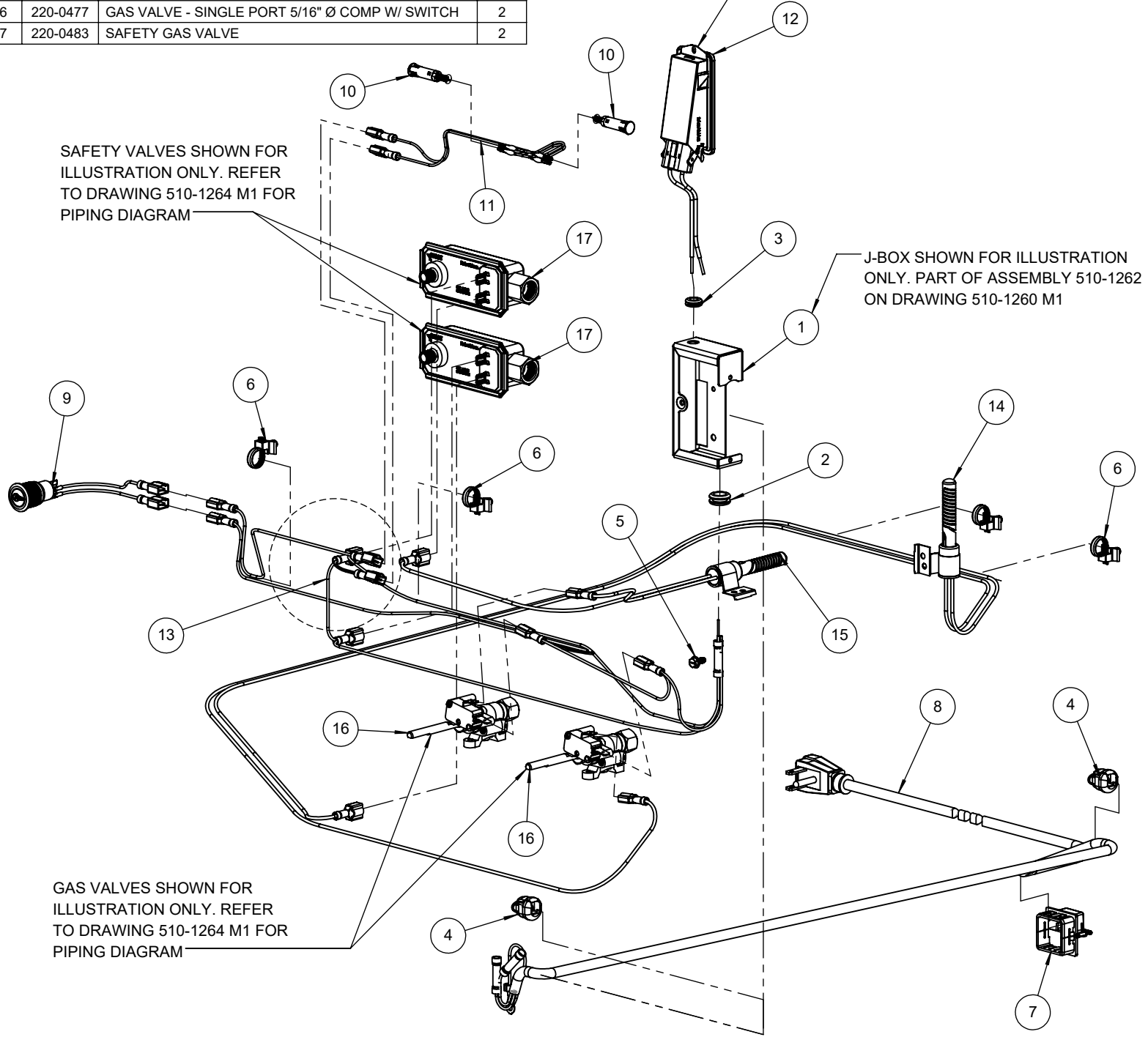
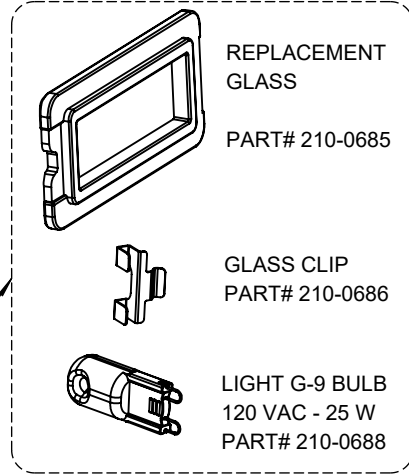
**DRAWING TITLE:**  
**MANIFOLD ASSEMBLY**

**DRAWING NO.:**  
**510-1264 M1**

**SHEET 1 OF 1**

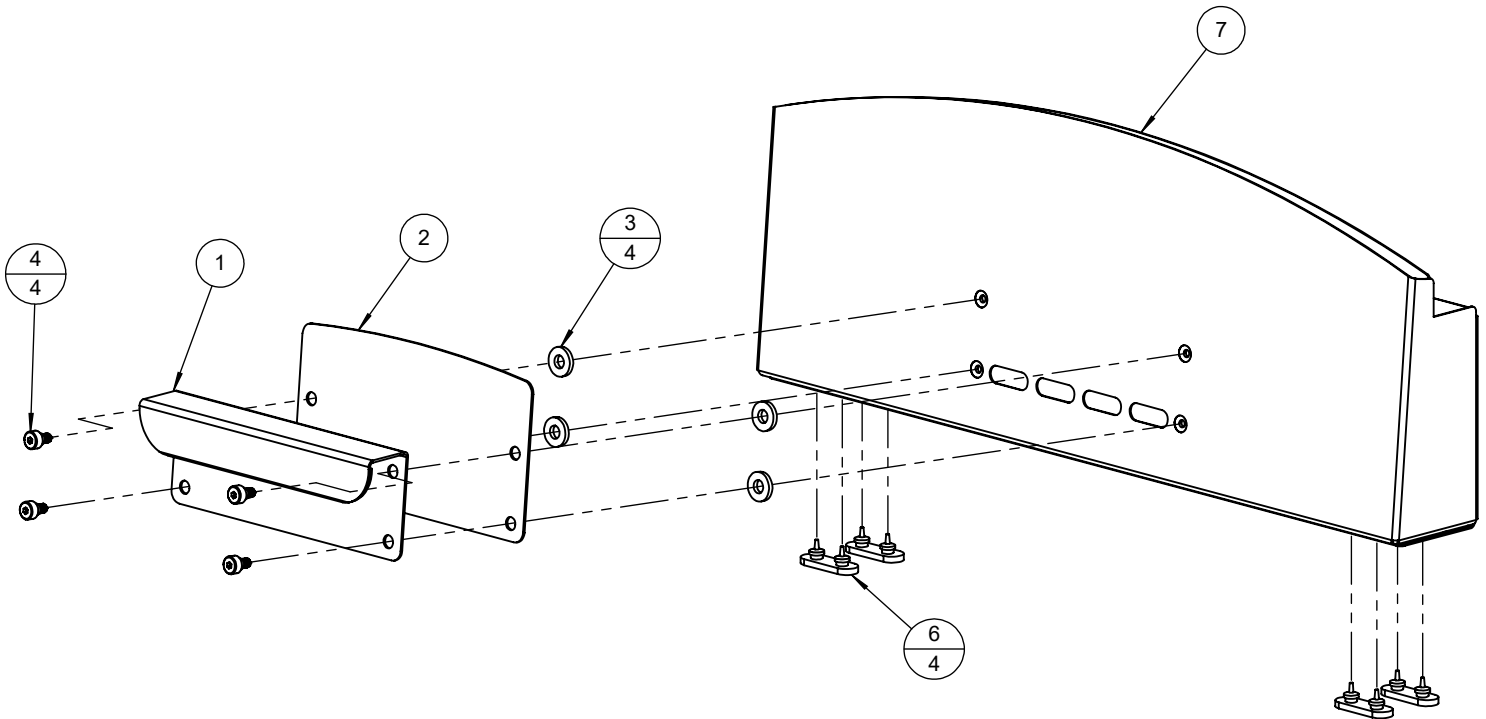
**BILL OF MATERIAL**

NO.	PART #	DESCRIPTION	QTY
1	100-3118	ARTP-PZA J-BOX	1
2	200-0003	GROMMET 3/8" Ø - MMC# 9600K33	1
3	200-0007	GROMMET 1/4" Ø - SRB RUBBER	1
4	200-0009	HEYCO STRESS RELIEF BUSHING # 1200 SR 6N3-4	2
5	200-0320	SCREW 8-32 x 3/8 - GROUNDING SCREW	1
6	210-0258	CABLE TIE - T&B L-5-50PM-9	4
7	210-0269	CABLE STRAIN RELIEF - HEYCO 1843	1
8	210-0499	NEMA 5-15 - 90° PLUG 18/3 EXTENSION CORD	1
9	210-0584	SWITCH - LIGHT - LATCHING [ON/OFF]	1
10	210-0624	LIGHT - BLUE LED - 8mm Ø - 110 VAC	2
11	210-0675	LIGHT HARNESS	1
12	210-0680	LAMP FIXTURE G9-B / 120 V - 25 W	1
13	210-0681	ARTP-PZA ELECTRICAL HARNESS	1
14	210-0691	BACK BURNER - HOT SURFACE IGNITER	1
15	210-0692	BOTTOM BURNER - HOT SURFACE IGNITER	1
16	220-0477	GAS VALVE - SINGLE PORT 5/16" Ø COMP W/ SWITCH	2
17	220-0483	SAFETY GAS VALVE	2



**BILL OF MATERIAL**

NO.	PART #	DESCRIPTION	QTY
1	100-3148	ARTP-PZA OVEN COVER HANDLE	1
2	100-3149	ARTP-PZA OVEN COVER HANDLE HEAT SHIELD	1
3	200-0092	1/4 X 1/8 X 5/8 FLAT WASHER - SPACER	4
4	200-0112	SCREW 10-32 x 1/4 x 1/8 x 1/4- SHOULDER - 1/8 SOCKET - SS	4
5	200-0194	POP RIVET Ø.125 X .063- .125 RANGE	2
6	290-0468	BUMBER - OBROUND - 600 °F - BLACK SILICONE	4
7	510-1268	ARTP-PZA - OVEN FRONT COVER BACK ASSEMBLY	1



*Artisan*<sup>™</sup>  
*Professional Grills by Alfresco*