

TM
Alfresco™

Open Air Culinary Systems



AR REFRIGERATORS
SOLID OVERLAY DRAWERS

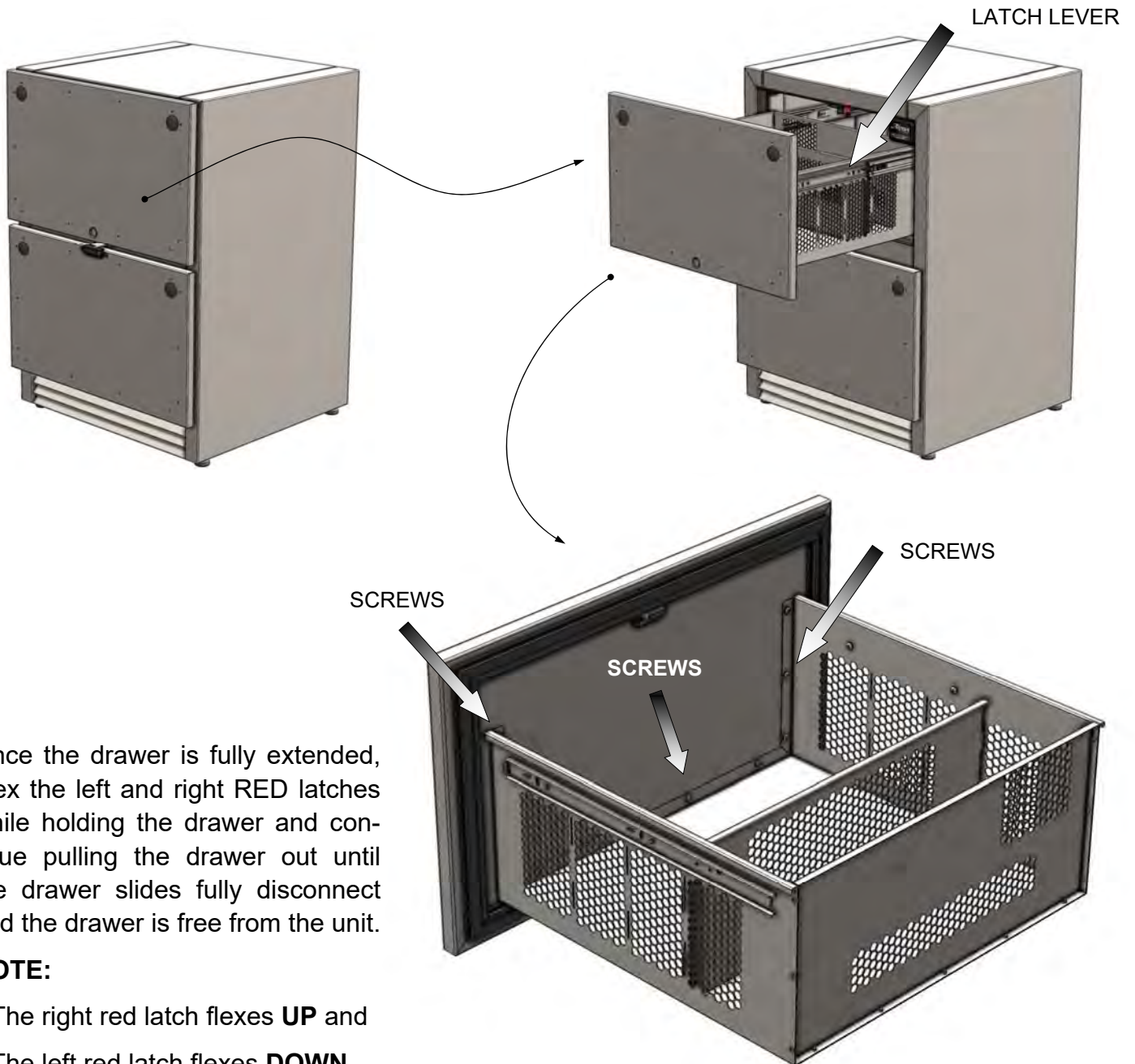


OVERLAY DRAWER INSTALLATION INSTRUCTIONS

DRAWER REMOVAL:

1. Begin by removing the existing drawer (top or bottom) from the unit.

This can be done by opening the drawer fully and exposing the RED color latches on the left and right drawer slides.



2. Once the drawer is fully extended, Flex the left and right RED latches while holding the drawer and continue pulling the drawer out until the drawer slides fully disconnect and the drawer is free from the unit.

NOTE:

- The right red latch flexes **UP** and
 - The left red latch flexes **DOWN**
2. Remove the 10-32 screws that hold the Drawer face assembly from the drawer body.
 3. The face of the drawer is now separated.

5. Remove the magnetic gasket from the drawer face carefully pulling it out of the drawer plastic gasket track.

MAGNETIC
GASKET



6. Install the overlay drawer lock mechanism 510-1624 on the face of the overlay drawer.

If the drawer does require a lock system, skip this step.



Use the proper template for the lock locations:

- Template **100-4022** for AR 24D TOP drawer.
- Template **100-4026** for AR-24D BOTTOM drawer.
- Template **100-4029** for AR-28D TOP drawer.
- Template **100-4032** for AR-28D BOTTOM drawer.

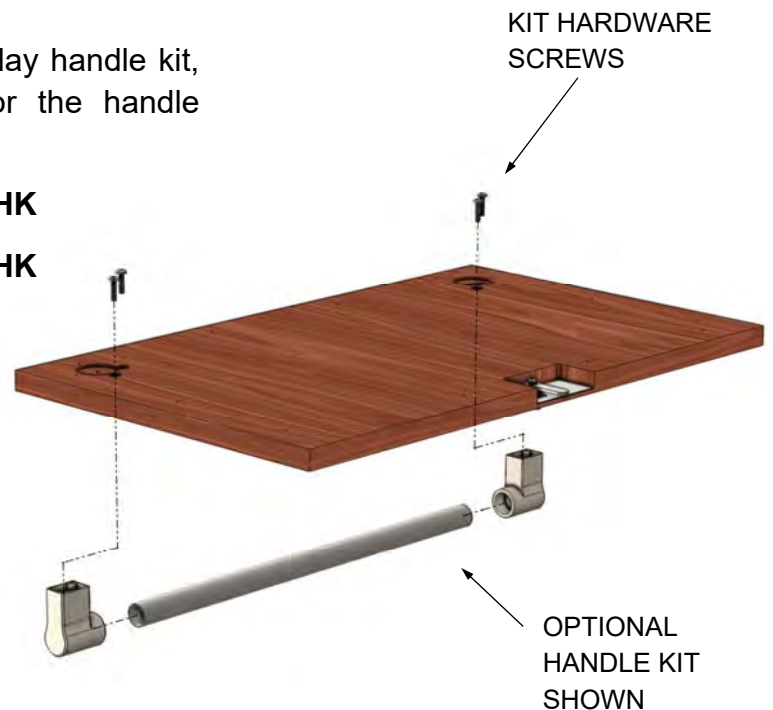
7. Install the drawer handles onto the face of the overlay drawer material.

If you are using the OPTIONAL Alfresco Overlay handle kit, use the proper pattern (above numbers) for the handle mounting locations:

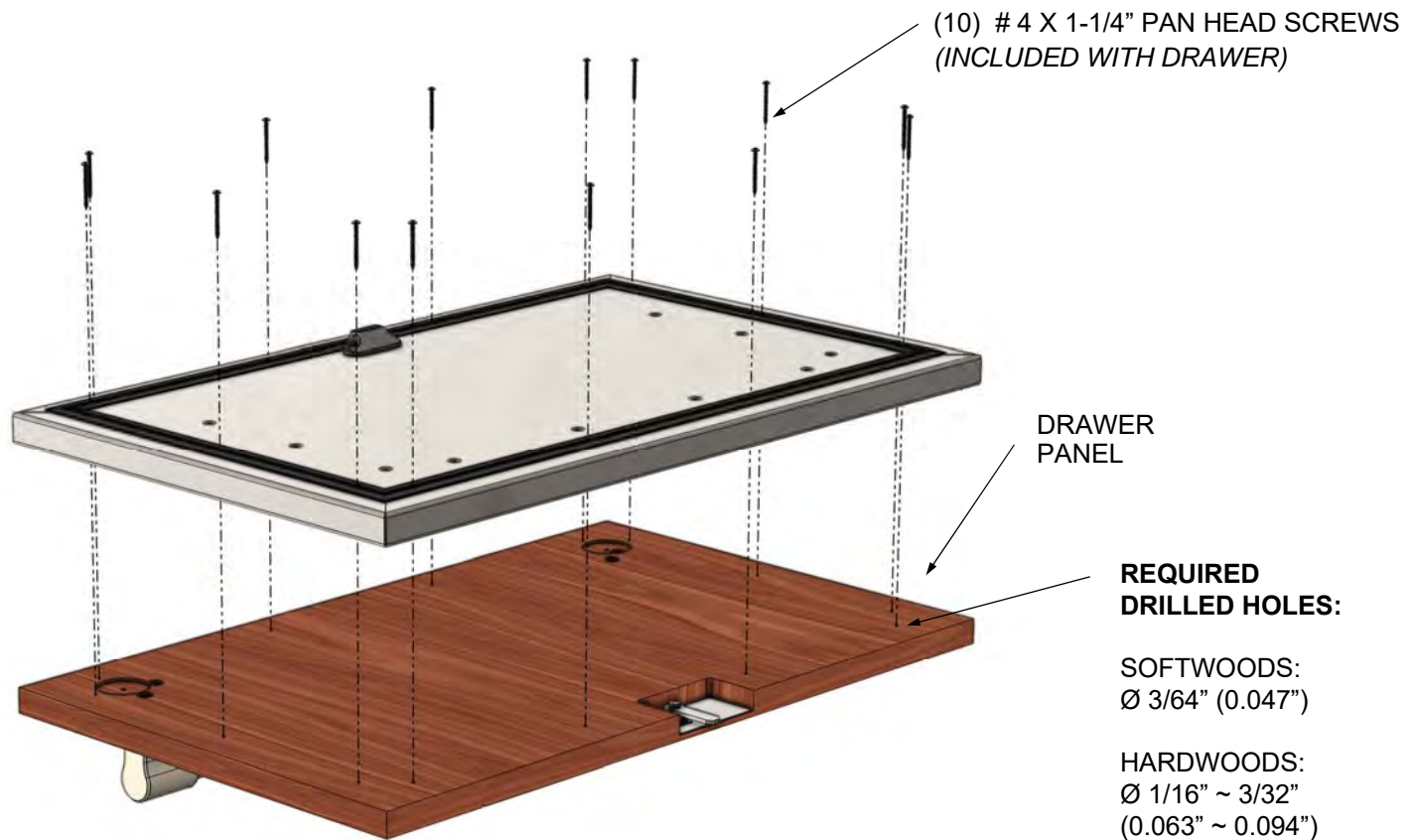
- AR-24D units use handle kit **AR-24DPR-HK**
- AR-28D units use handle kit **AR-28DPR-HK**

If you are using your own handle or pull hardware, install it according to your existing manufacturer's guidelines to match other cabinets.

Follow the above mentioned templates as a general guide to drill the necessary holes for the specific hardware you will be using.



8. Turn over the stainless drawer face so the inside face is on the top.
9. Install the stainless drawer face over the overlay drawer face centering it on from all sides.
10. Press firmly into place (with clamping tools if required) and fasten the stainless drawer onto the overlay with the provided (10) # 4 x 1-1/4" screws.



INSTALLATION:

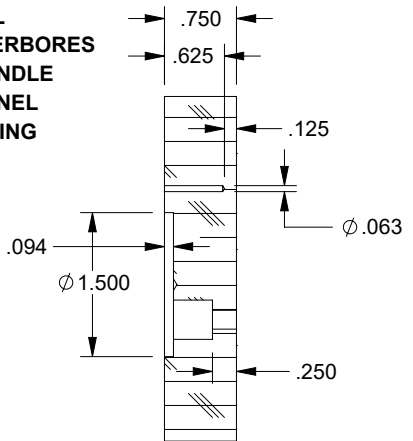
Finish by re-installing the magnetic gasket on the PVC track and re-installing the drawer face (now with the overlay panel) onto the refrigerator drawer body using the 10-32 screws removed on step 3.

Install the drawer assembly back into the refrigerator unit by first extending the drawer slide bodies that remained on the refrigerator unit. Extend these slides (left and right) fully out.

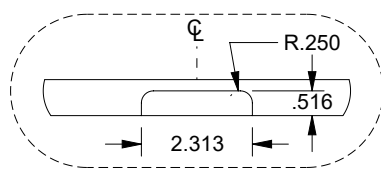
Insert the drawer body into the slides and push in the drawer until the slides lock into place and the magnetic gaskets makes contact with the body. Open and close the drawer to verify proper operation.

Repeat the same process for the second drawer (top or bottom) as needed to complete the installation of overlay drawer faces.

TYPICAL
COUNTERBORES
FOR HANDLE
AND PANEL
FASTENING



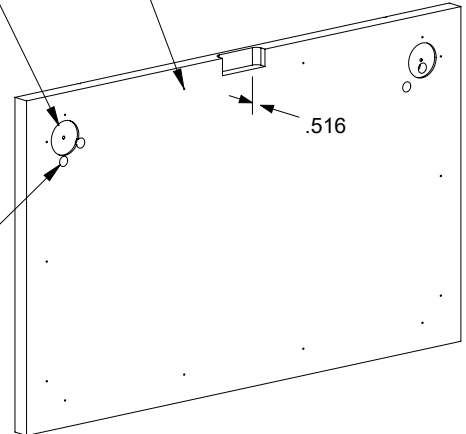
SECTION A-A
SCALE 1 : 2



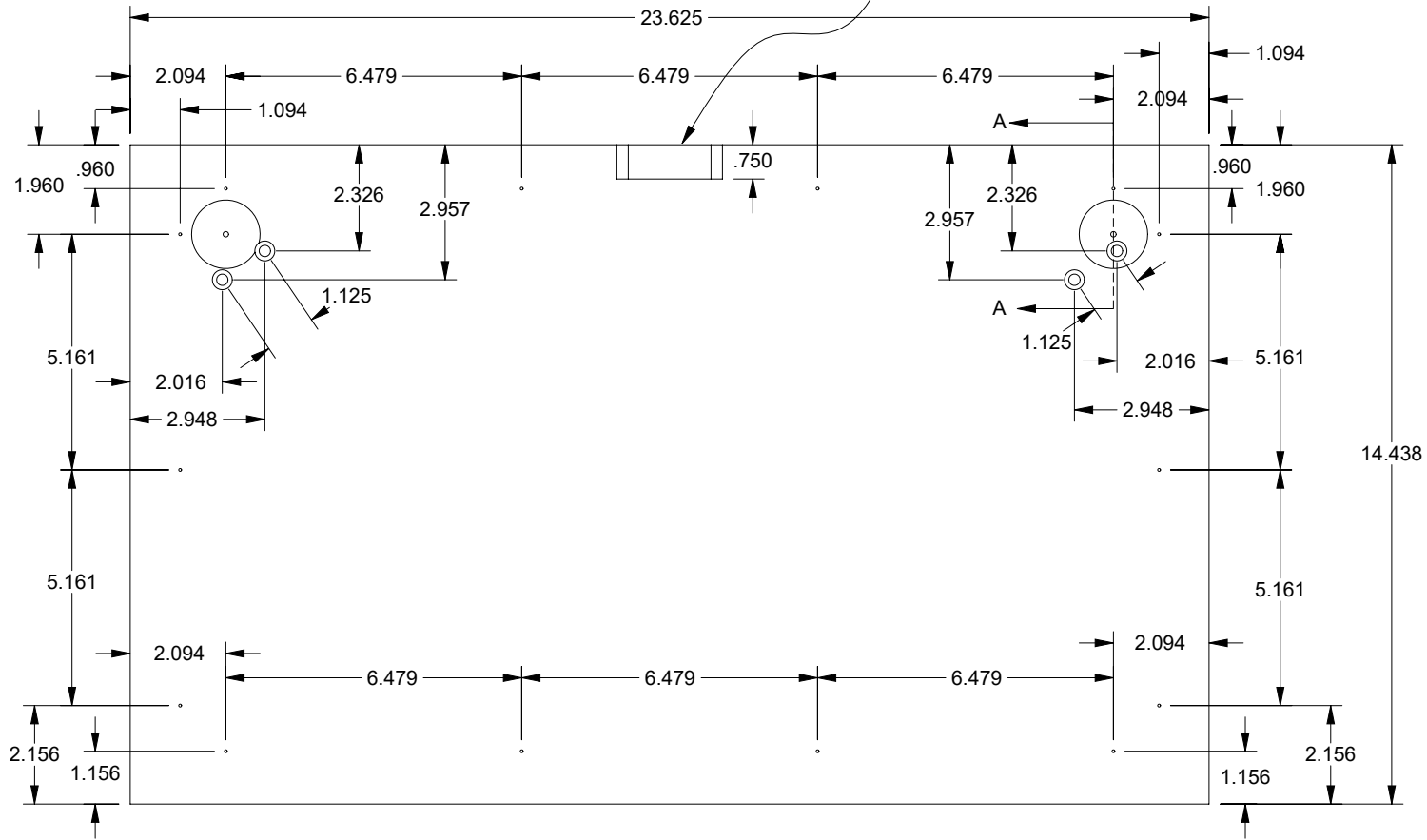
LOCK
POCKET

2X ϕ .120 ∇ .094
 \square ϕ 1.500 ∇ .094
COUNTERBORE FOR
FOAMING HOLE CAPS

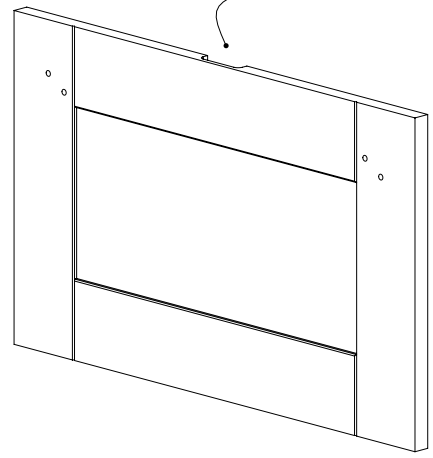
14X ϕ .063 ∇ .625
PILOT HOLES FOR
PANEL FASTENERS



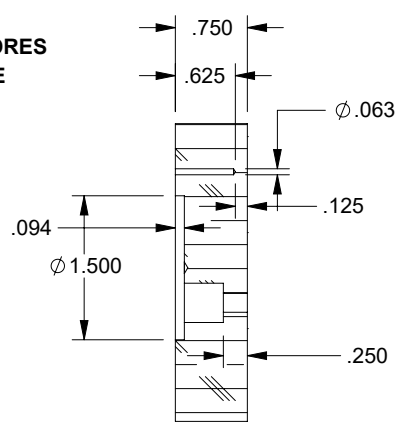
4X ϕ .250 THRU ALL
 \square ϕ .438 ∇ .500
COUNTERBORES FOR
OPTIONAL HANDLE KIT



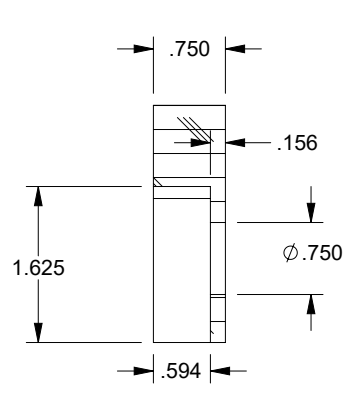
POCKET CUTOUT
FOR LOCK



**TYPICAL
COUNTERBORES
FOR HANDLE
AND PANEL
FASTENING**



SECTION A-A
SCALE 1 : 2

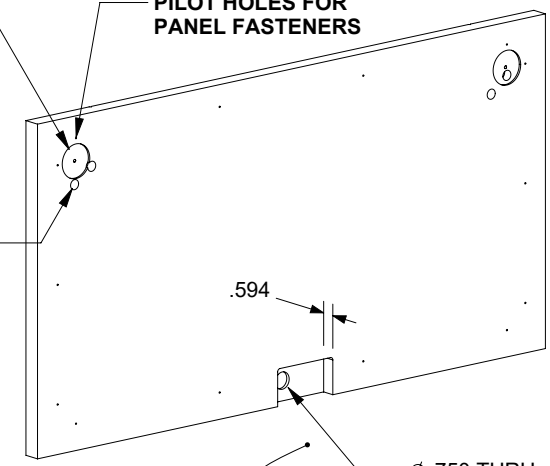


SECTION B-B
SCALE 1 : 2
LOCK CUTOUT (OPTIONAL)

2X Ø .120 ∇ .094
□ Ø 1.500 ∇ .094
**COUNTERBORE FOR
FOAMING HOLE CAPS**

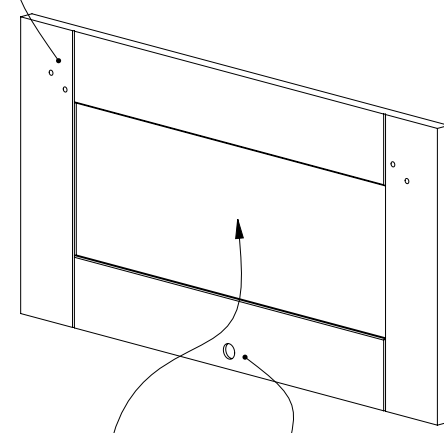
4X Ø .250 THRU ALL
□ Ø .438 ∇ .500
**COUNTERBORE HOLES
FOR OPTIONAL HANDLE KIT**

14X Ø .063 ∇ .625
**PILOT HOLES FOR
PANEL FASTENERS**



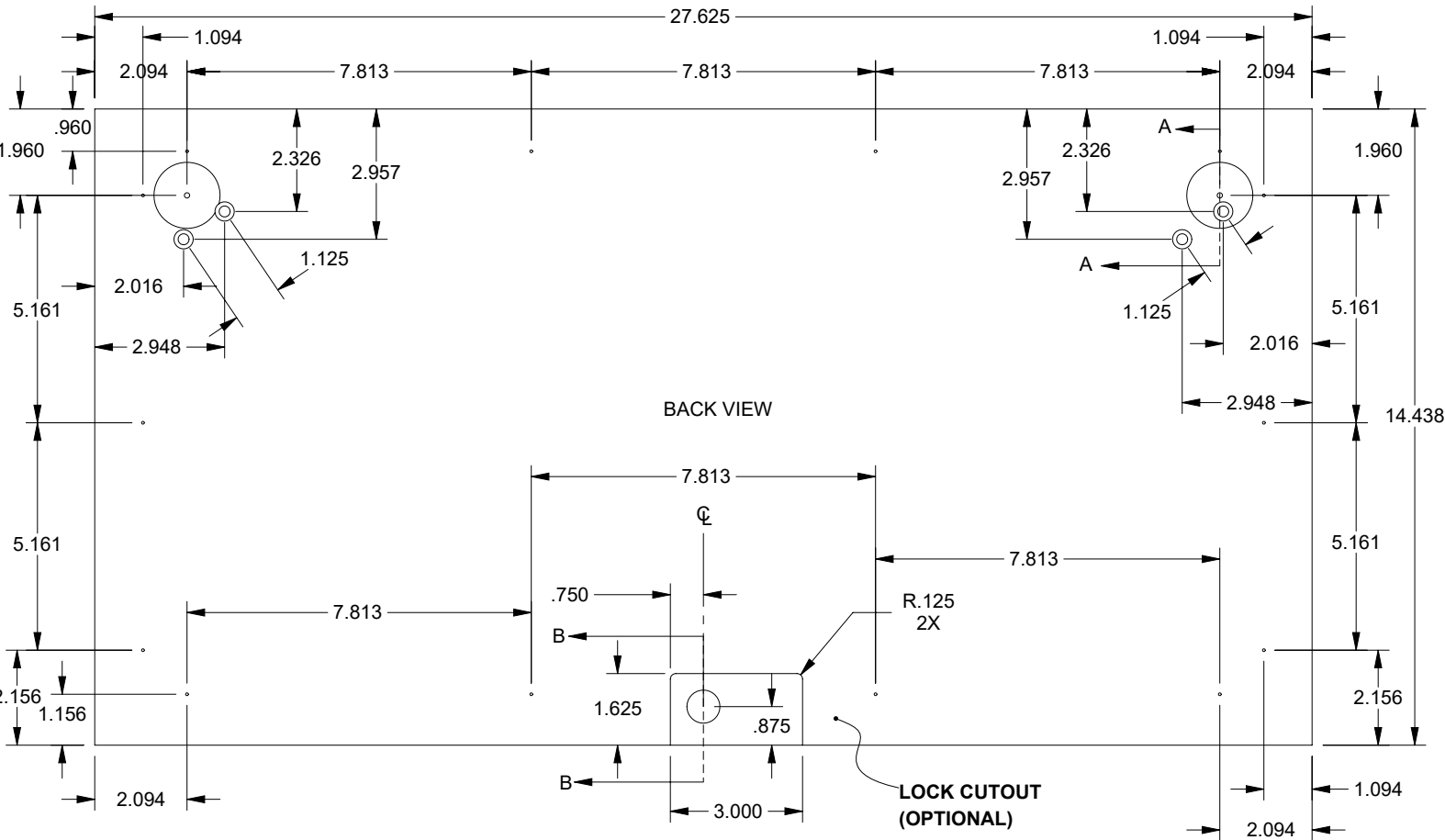
**LOCK CUTOUT
(OPTIONAL)**

**HANDLE HOLES
(OPTIONAL)**



PANEL OR SOLID
WOOD SURFACE

**LOCK HOLE
(OPTIONAL)**



BACK VIEW

**LOCK CUTOUT
(OPTIONAL)**



SUPERIOR EQUIPMENT SOLUTIONS
1085 BIXBY DRIVE
CITY OF INDUSTRY, CA. 91745

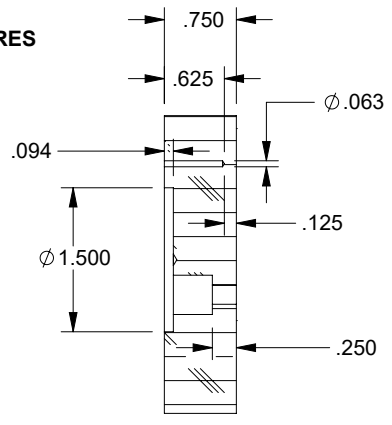
THE INFORMATION CONTAINED IN THIS DRAWING IS THE SOLE PROPERTY OF SUPERIOR EQUIPMENT SOLUTIONS, INC. ANY REPRODUCTION IN PART OR AS A WHOLE WITHOUT WRITTEN PERMISSION FROM SUPERIOR EQUIPMENT SOLUTIONS, INC. IS PROHIBITED.
CUSTOMER: SES
C:\SES_PDM\REFRIGERATIONAL\FRESICOVAR-28D\

DRAWN BY: ADRIAN CRISCI
MATERIAL: Maple
FINISH:
WEIGHT: 4.719 Lbs.

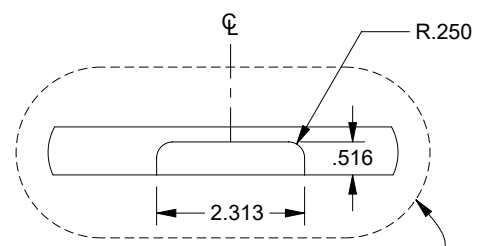
LAST SAVED: 10/2/2025 12:02:37 PM
PROJECT TITLE: AR-28D
DRAWING TITLE:
AR-28D WOOD PANEL - TOP DRAWER - BY CUSTOMER

DRAWING NO.: 100-4029
PAGE SIZE:
LETTER
SHEET 1 OF 1

TYPICAL
COUNTERBORES
FOR HANDLE
AND PANEL
FASTENING



SECTION A-A
SCALE 1 : 2

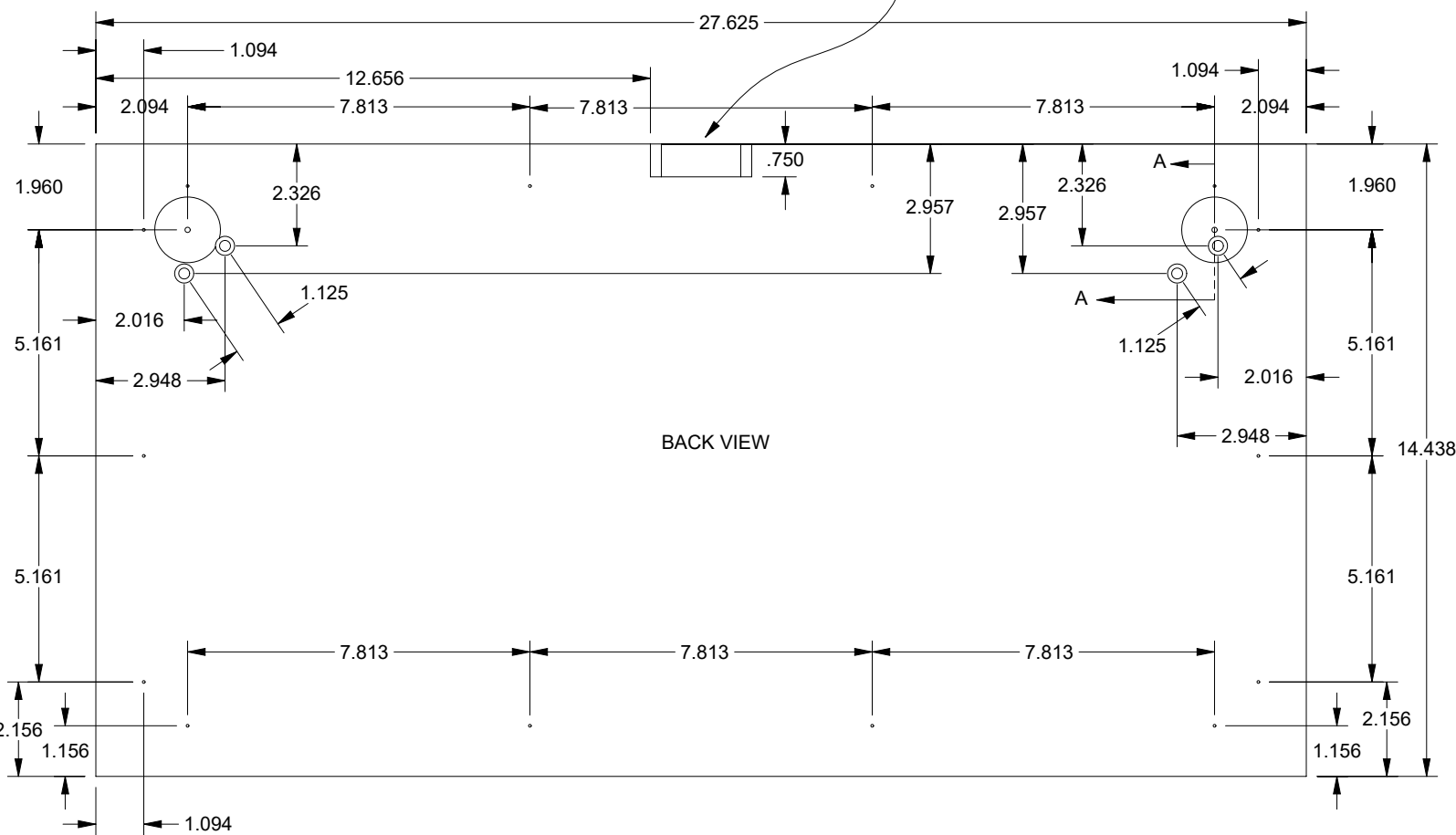
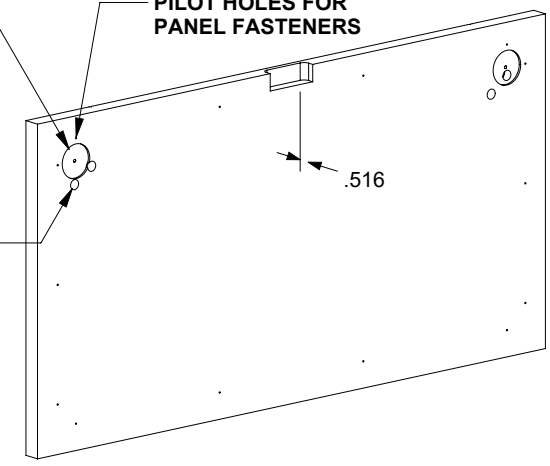


LOCK
POCKET

2X Ø .120 ∇ .094
□ Ø 1.500 ∇ .094
COUNTERBORE FOR
FOAMING HOLE CAPS

14X Ø .063 ∇ .625
PILOT HOLES FOR
PANEL FASTENERS

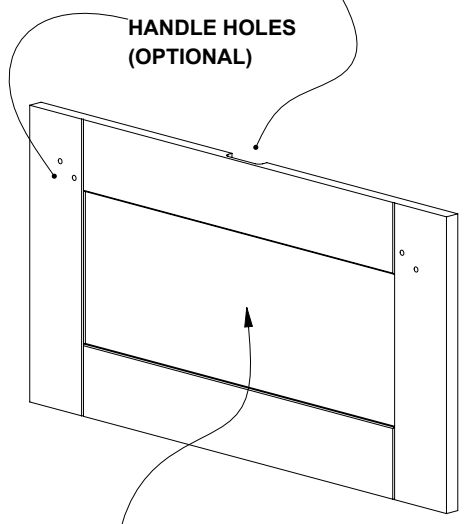
4X Ø .250 THRU ALL
□ Ø .438 ∇ .500
COUNTERBORE HOLES
FOR OPTIONAL HANDLE KIT



BACK VIEW

DRAWER LOCK
POCKET
(OPTIONAL)

HANDLE HOLES
(OPTIONAL)

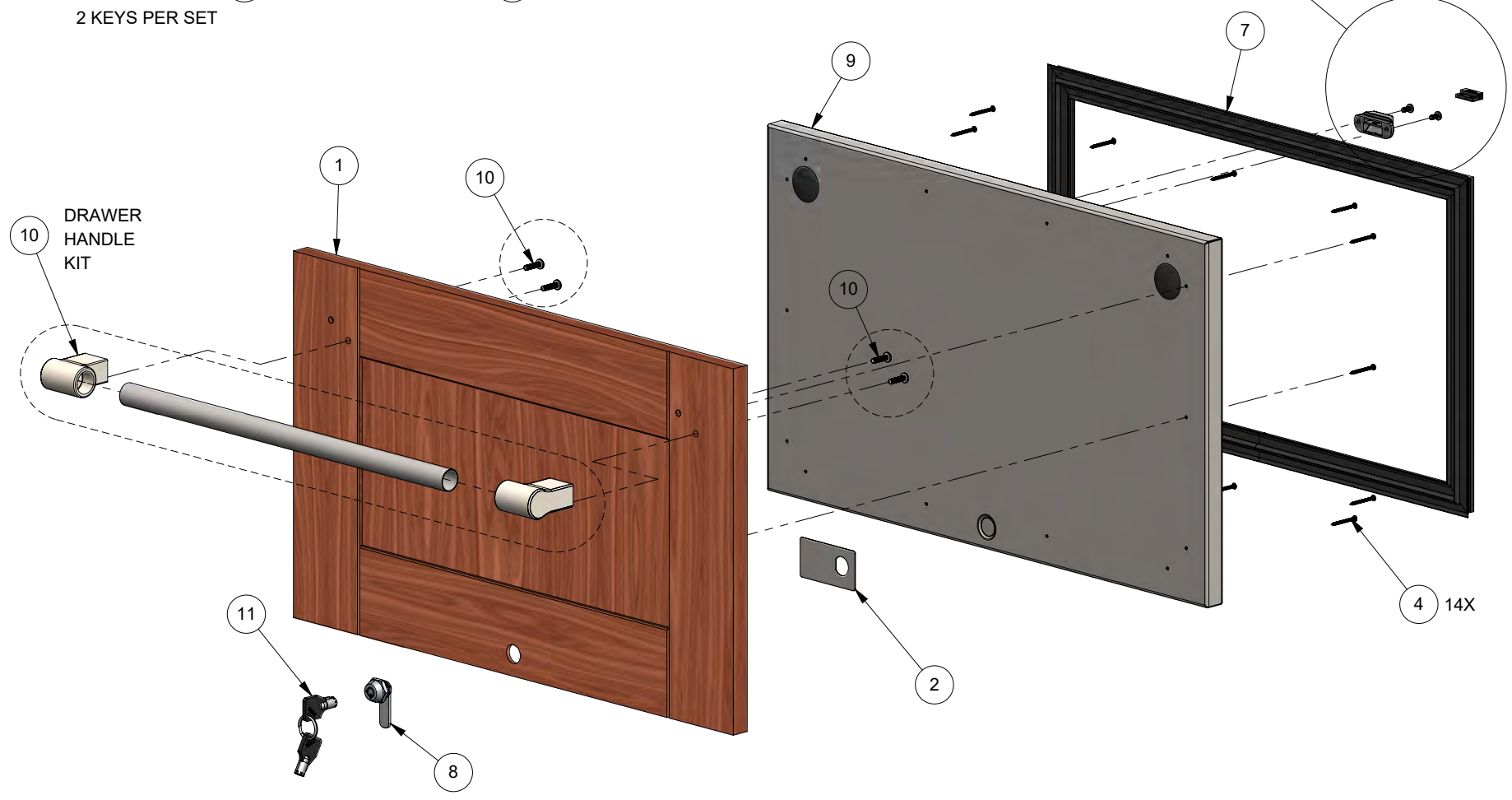


PANEL OR SOLID
WOOD SURFACE

BILL OF MATERIAL

NO.	PART #	DESCRIPTION	QTY
1	100-4022	AR-24 WOOD PANEL - TOP DRAWER - BY CUSTOMER	1
2	100-4024	DRAWER LOCK SUPPORT PANEL	1
3	200-0100	SCREW 8-32 X 3/8 PAN HD PHILLIPS, SS	2
4	200-0501	SCREW # 4 x 1-1/4" - PAN HEAD # 1 PHILIPS - 18-8 SS	14
5	210-0737	REED SWITCH MAGNET	1
6	290-0574	REED SWITCH MAGNET HOUSING	1
7	290-0773	GASKET, DRAWER, MAGNETIC, AR-24D	1
8	290-0793	LOCK, KEY, CYLINDER, LONG CAM	1
9	510-1694	AR-24D OVERLAY TOP DRAWER FACE FOAMED ASSEMBLY	1
10	AR-24DPR-HK	AR-24D OVERLAY DRAWER HANDLE KIT (OPTIONAL)	1
11	SEE NOTE	LOCK KEY SET	1

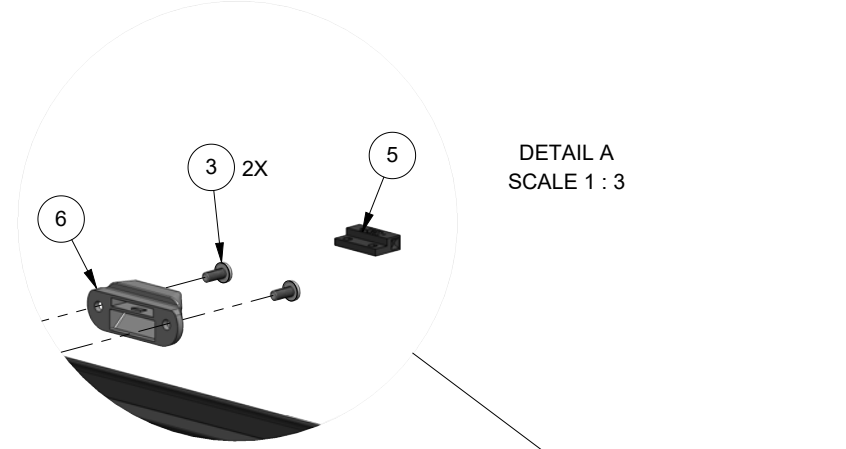
NOTE: LOCK CYLINDER (8) IS MATCHED TO KEY SET (11)
2 KEYS PER SET



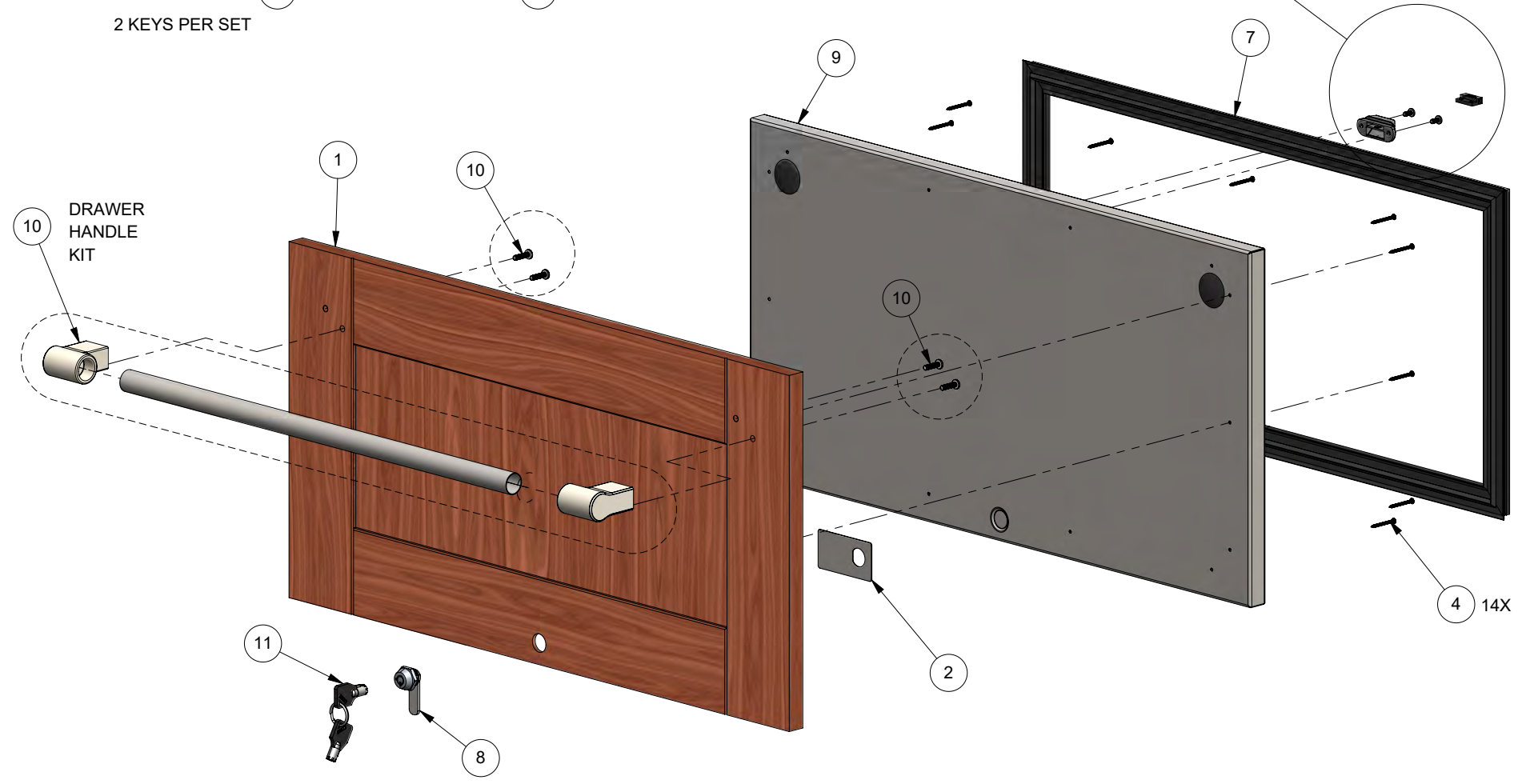
DETAIL A
SCALE 1 : 3

BILL OF MATERIAL

NO.	PART #	DESCRIPTION	QTY
1	100-4029	AR-28D WOOD PANEL - TOP DRAWER - BY CUSTOMER	1
2	100-4024	DRAWER LOCK SUPPORT PANEL	1
3	200-0100	SCREW 8-32 X 3/8 PAN HD PHILLIPS, SS	2
4	200-0501	SCREW # 4 x 1-1/4" - PAN HEAD # 1 PHILIPS - 18-8 SS	14
5	210-0737	REED SWITCH MAGNET	1
6	290-0574	REED SWITCH MAGNET HOUSING	1
7	290-0782	GASKET, DRAWER, MAGNETIC, AR-28D	1
8	290-0793	LOCK, KEY, CYLINDER, LONG CAM	1
9	510-1700	AR-28D OVERLAY TOP DRAWER FACE FOAMED ASSEMBLY	1
10	AR-28DPR-HK	AR-28D OVERLAY DRAWER HANDLE KIT (OPTIONAL)	1
11	SEE NOTE	LOCK KEY SET	1



NOTE: LOCK CYLINDER (8) IS MATCHED TO KEY SET (11)
2 KEYS PER SET



BILL OF MATERIAL

NO.	PART #	DESCRIPTION	QTY
1	100-4032	AR-28D WOOD PANEL - BOTTOM DRAWER - BY CUSTOMER	1
2	200-0100	SCREW 8-32 X 3/8 PAN HD PHILLIPS, SS	2
3	200-0501	SCREW # 4 x 1-1/4" - PAN HEAD # 1 PHILIPS - 18-8 SS	14
4	210-0737	REED SWITCH MAGNET	1
5	290-0574	REED SWITCH MAGNET HOUSING	1
6	290-0579	ALFRESCO RANGE LOGO - SELF ADHESIVE	1
7	290-0782	GASKET, DRAWER, MAGNETIC, AR-28D	1
8	290-0909	DRAWER LOCK POCKET COVER - OVERLAY DRAWER	1
9	510-1701	AR-28D OVERLAY BOTTOM DRAWER FACE FOAMED ASSEMBLY	1
10	AR-28DPR-HK	AR-28D OVERLAY DRAWER HANDLE KIT (OPTIONAL)	1

