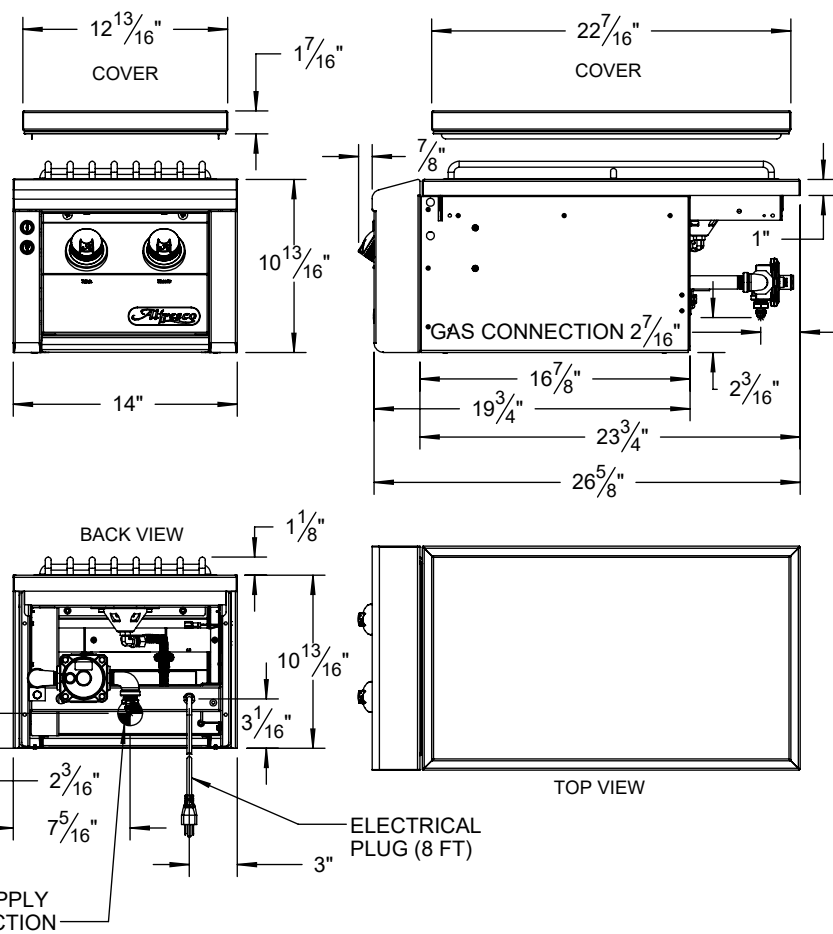


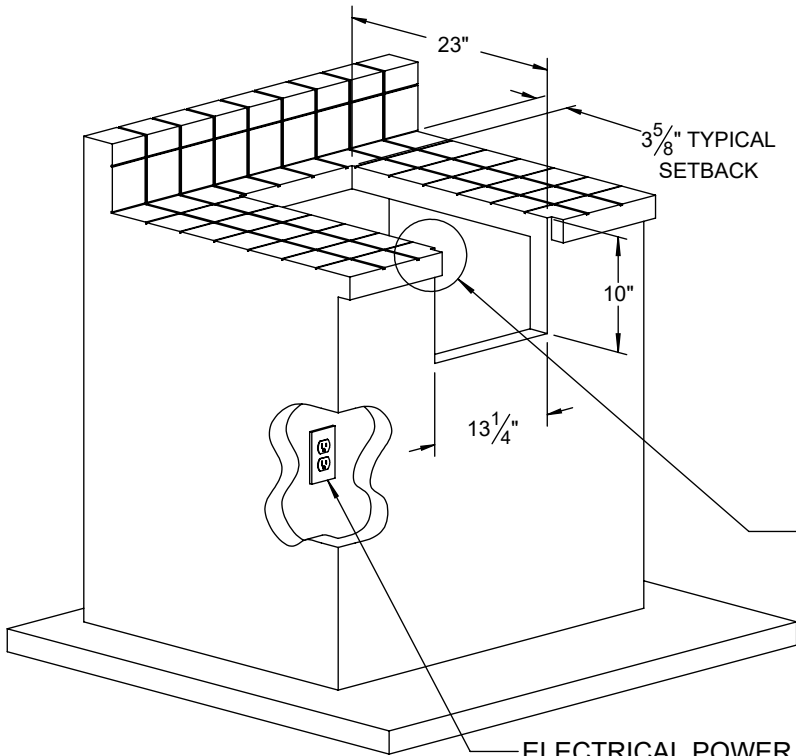
**AXESB-2 TYPICAL INSTALLATION**



TOP VIEW

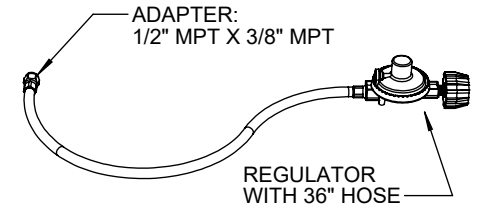
**COUNTERTOP CUTOUT REQUIREMENTS**

**NOTE:** A GAS LINE IS REQUIRED INSIDE THE COUNTER FOR OPERATION FOR LP-GAS SETUP SEE NOTE AT RIGHT. IT IS RECOMMENDED THAT A FLEXIBLE HOSE IS USE FOR NG-GAS SETUPS 2<sup>3</sup>/<sub>16</sub>" TO EASE INSTALLATIONS.

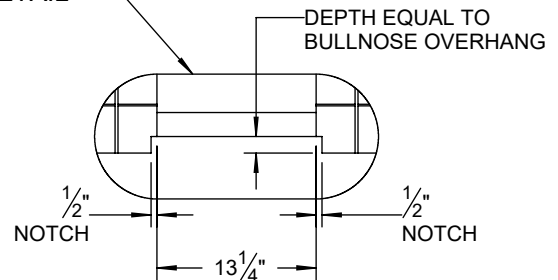


ELECTRICAL POWER REQUIRED.  
GFCI OUTLET RECOMMENDED

**LP GAS SETUP:**



**NOTE:** STANDARD UNIT HAS A NATURAL GAS (NG) CONNECTION WITH 1/2" FPT FITTING. IF LIQUID PROPANE (LP) OPTION IS ORDERED THE UNIT IS SUPPLIED WITH A REGULATOR, HOSE AND ADAPTER FITTING AS SHOWN.



**SPECIFICATIONS:**

BTUH = 40,000  
FUEL = NG @ 5" W.C. OR LP @ 10" W.C.  
ELECTRICAL POWER = 115 VAC - 50/60 Hz. - 10 mA  
GAS CONNECTION = 1/2" NPT (NG) OR 3/8" ODF (LP)