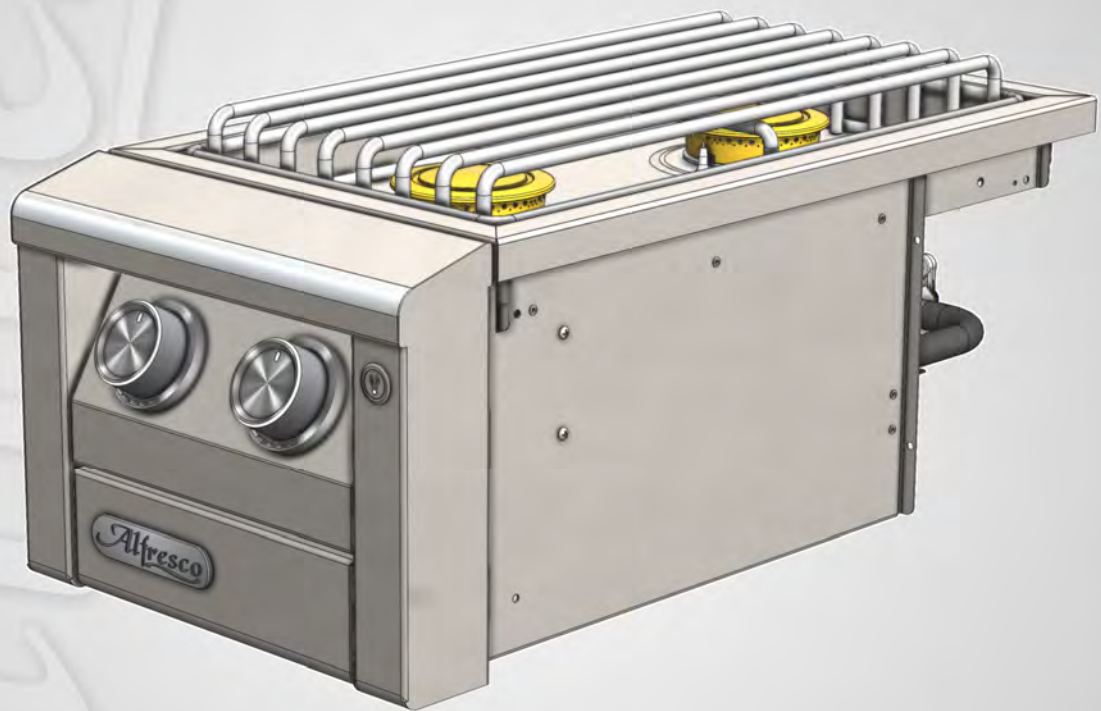


TM

AlfrescoTM

Open Air Culinary Systems

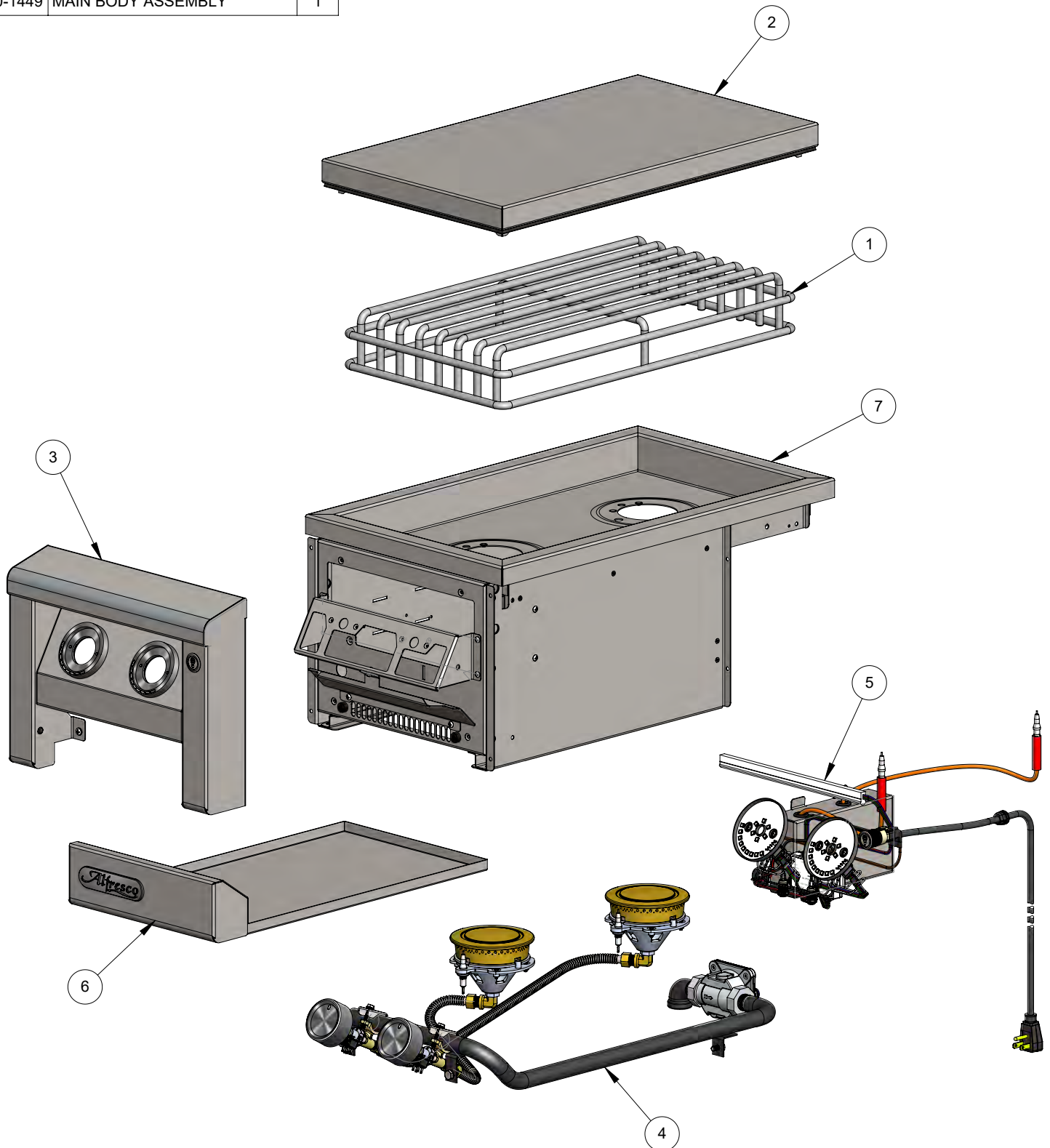


AIPGSB-2

Parts Manual

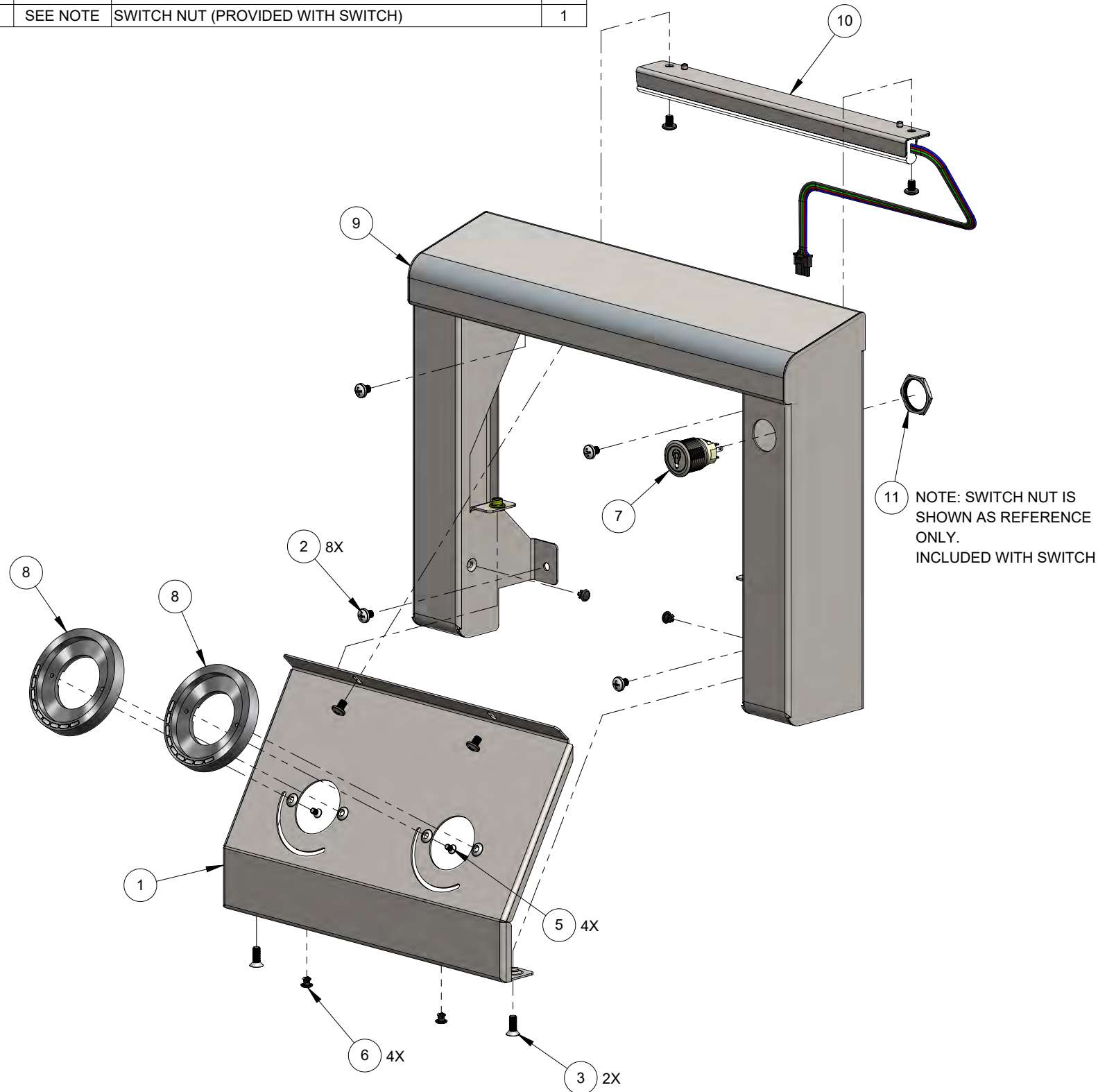
BILL OF MATERIAL

NO.	PART #	DESCRIPTION	QTY
1	290-0069	GRATE - DUAL SIDE BURNER	1
2	510-0532	COVER ASSEMBLY	1
3	510-1433	FRONT PANEL ASSEMBLY	1
4	510-1435	PIPING ASSEMBLY	1
5	510-1436	ELECTRICAL ASSEMBLY	1
6	510-1438	GREASE TRAY ASSEMBLY	1
7	510-1449	MAIN BODY ASSEMBLY	1



BILL OF MATERIAL

NO.	PART #	DESCRIPTION	QTY
1	100-3402	FRONT PANEL - CONTROL PANEL	1
2	200-0082	SCREW, MACH, 10-32 x 1/4", PH, PAN, SS	8
3	200-0326	SCREW, MACH, 10-32 x 1/2", PH, FLT, SS	2
4	200-0367	RIVNUT, HEX 10-32 THREAD - OPEN END	2
5	200-0425	SCREW 6-32 x 1/4"L - FLAT HEAD 82° UNDERCUT - PHILIPS	4
6	200-0445	SNAP RIVET, Ø .161" MOUNT HOLE, NYLON 6, BLACK	4
7	210-0711	SWITCH - LIGHT - ON/OFF	1
8	290-0527	KNOB BEZEL ASSEMBLY	2
9	510-1434	FRONT PANEL WELDED	1
10	510-1437	FRONT PANEL LIGHT ASSEMBLY	1
11	SEE NOTE	SWITCH NUT (PROVIDED WITH SWITCH)	1



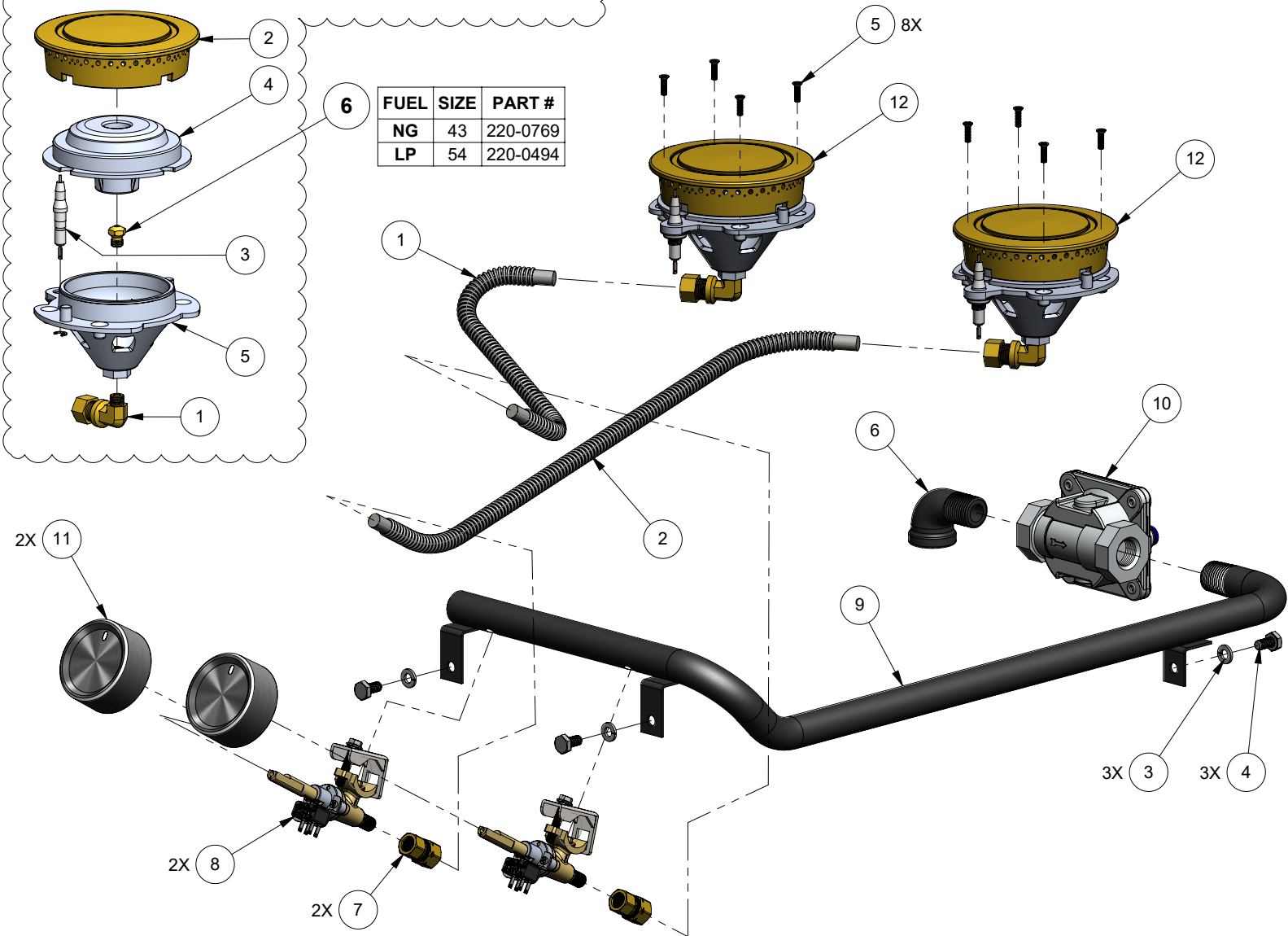
BILL OF MATERIAL

NO.	PART #	DESCRIPTION	QTY
1	100-0917	GAS LINE - FLEX 3/8" X 8" L - SS	1
2	100-0941	GAS LINE - FLEX 3/8" X 24" L - SS	1
3	200-0087	WASHER, 1/4" - SPRING LOCK - SS	3
4	200-0089	BOLT - HEX HEAD 1/4-20 x 1/2" L	3
5	200-0098	SCREW 6-32 X 1/2" - FLAT HEAD 82° - PHILIPS	8
6	200-0274	ELBOW, STREET, 1/2" NPT X 1/2" NPT-F, BLACK IRON	1
7	220-0438	COUPLING, 1/8-27 NPT-Female X 3/8" COMP., BRASS	2
8	220-0510	GAS VALVE ASSEMBLY	2
9	220-0511	GAS MANIFOLD	1
10	220-0555	REGULATOR GAS - LOW TEMP - 4/10" W.C. CONV.	1
11	290-0526	KNOB ASSEMBLY	2
12	SEE NOTE	SIDE BURNER ASSEMBLY	2

BILL OF MATERIAL

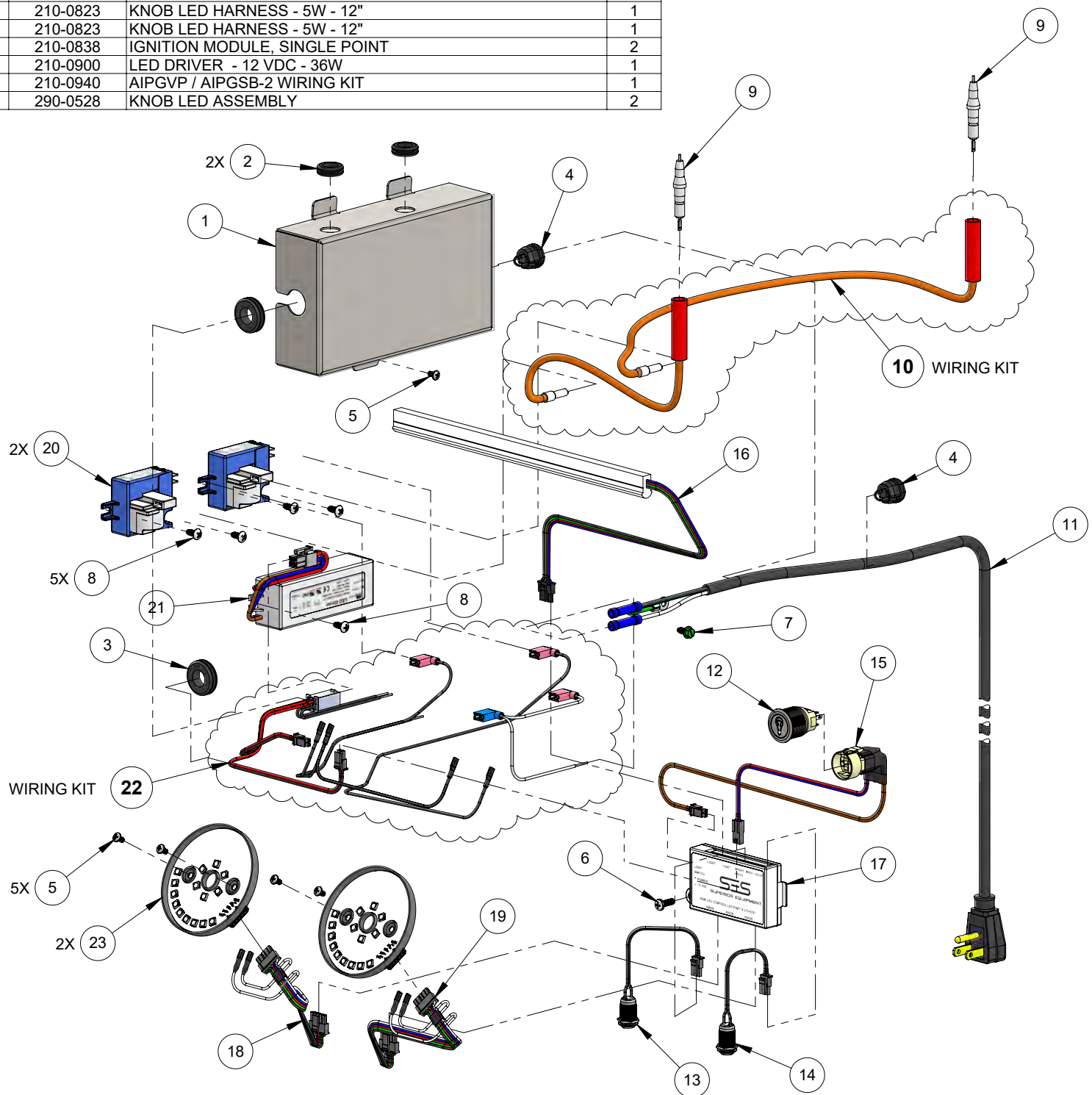
NO.	PART #	DESCRIPTION	QTY
1	220-0293	ELBOW, 1/8 NPT x 3/8" COMP, BRASS	1
2	290-0072	SIDE BURNER - EXTERIOR CAP	1
3	290-0074	ELECTRODE ASSEMBLY	1
4	290-0222	SIDE BURNER - INNER CAP	1
5	290-0344	SIDE BURNER BODY	1
6	SEE NOTE	SIDE BURNER ORIFICE	1

FUEL	SIZE	PART #
NG	43	220-0769
LP	54	220-0494



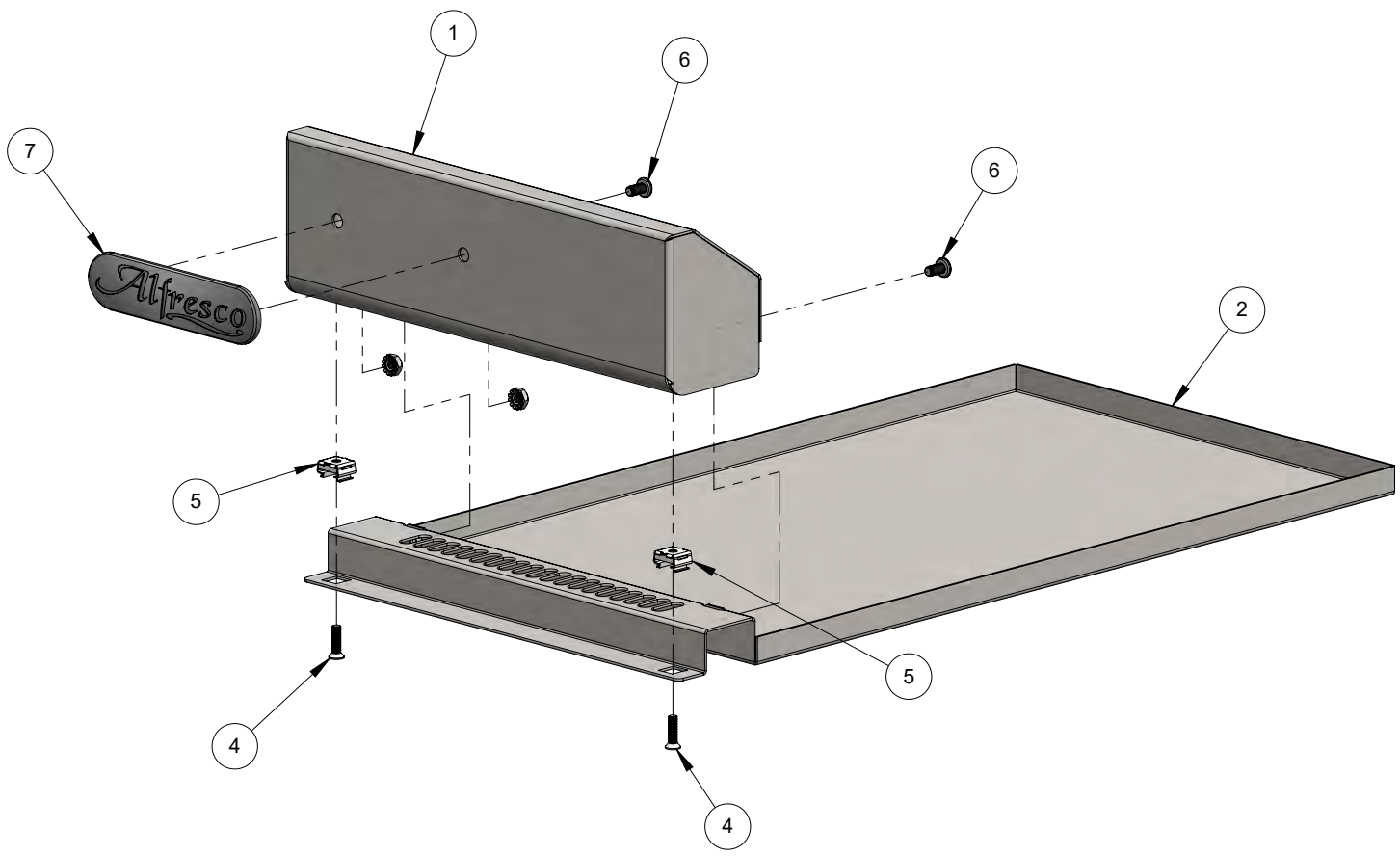
BILL OF MATERIAL

NO.	PART #	DESCRIPTION	QTY
1	100-3406	ELECTRICAL BOX	1
2	200-0004	GROMMET 9/16" OD, 1/16" MAT'L, 7/16" ID	2
3	200-0005	GROMMET Ø1/2"	2
4	200-0009	STRAIN RELIEF, Ø.625 MOUNT HOLE X .062 THK., NYLON 6/6	2
5	200-0199	SCREW, MACH, 6-32 X 1/4", PH, PAN, SS	5
6	200-0270	SCREW 8-32 X 1/2 - PAN HEAD PHILIPS - 304 SS	1
7	200-0320	SCREW 8-32 X 3/8", HEX HD FLNG, TYPE F, GREEN CHRMT	1
8	200-0347	SCREW, SMS, 8-32 x 3/8", PH, PAN, TYPE F, 410 SS	5
9	210-0248	SIDE BURNER ELECTRODE A1202-E	2
10	210-0309	IGNITER WIRE KIT	1
11	210-0499	CABLE 115/120V 10A 18/3 SJTOW - 96"- 90° PLUG NEMA 5-15	1
12	210-0711	SWITCH - LIGHT - ON/OFF	1
13	210-0726	BRIGHTNESS / ON / OFF TOGGLE SWITCH	1
14	210-0753	COLOR TOGGLE SWITCH	1
15	210-0756	SWITCH RECEPTABLE - AIPGVP / AIPGSB-2	1
16	210-0763	NEON LED STRIP	1
17	210-0781	RGB LED CONTROLLER	1
18	210-0823	KNOB LED HARNESS - 5W - 12"	1
19	210-0823	KNOB LED HARNESS - 5W - 12"	1
20	210-0838	IGNITION MODULE, SINGLE POINT	2
21	210-0900	LED DRIVER - 12 VDC - 36W	1
22	210-0940	AIPGVP / AIPGSB-2 WIRING KIT	1
23	290-0528	KNOB LED ASSEMBLY	2



BILL OF MATERIAL

NO.	PART #	DESCRIPTION	QTY
1	145-0608	FRONT, GREASE TRAY	1
2	145-0609	PAN, GREASE TRAY	1
3	200-0238	NUT, KEPS, #10-32 UNF, 304SS	2
4	200-0361	SCREW 8-32 X 5/8" - FLAT HEAD 82° - PHILLIPS	2
5	200-0465	NUT, CAGE, #8-32, ZN	2
6	200-0469	SCREW, MACH, 10-32 x 3/8", PH, PAN, SS	2
7	290-0489	ALFRESCO RANGE LOGO	1



BILL OF MATERIAL

NO.	PART #	DESCRIPTION	QTY
1	100-3403	TOP DRAIN CHANNEL	1
2	100-3405	ELECTRONICS BRACKET	1
3	100-3407	ELECTRICAL COVER	1
4	200-0347	SCREW, SMS, 8-32 x 3/8", PH, PAN, TYPE F, 410 SS	9
5	290-0078	BUMPER 1/2"Ø X 1/4" PROJ. X 1/4" STEM	2
6	510-1432	AIPGSB-2 MAIN BODY SUBASSEMBLY	1

