

TM

AlfrescoTM

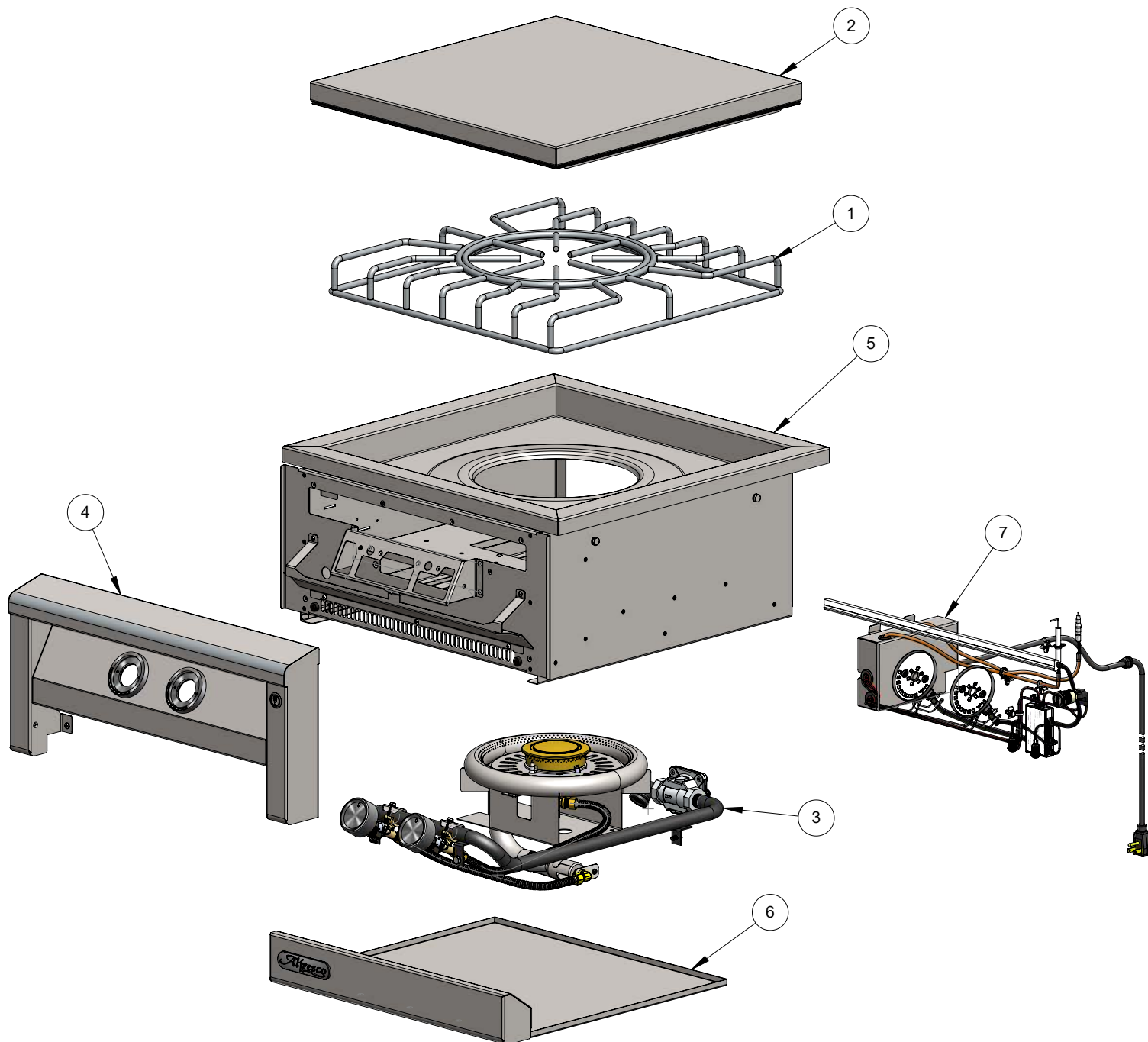
Open Air Culinary Systems



AIPGVP PARTS MANUAL

BILL OF MATERIAL

NO.	PART #	DESCRIPTION	QTY
1	510-0385	GRATE ASSEMBLY - POT & WOK USE	1
2	510-0387	COVER	1
3	510-1440	PIPING ASSEMBLY	1
4	510-1441	FRONT PANEL ASSEMBLY	1
5	510-1443	MAIN BODY ASSEMBLY	1
6	510-1445	GREASE TRAY ASSEMBLY	1
7	510-1447	ELECTRICAL ASSEMBLY	1



BILL OF MATERIAL

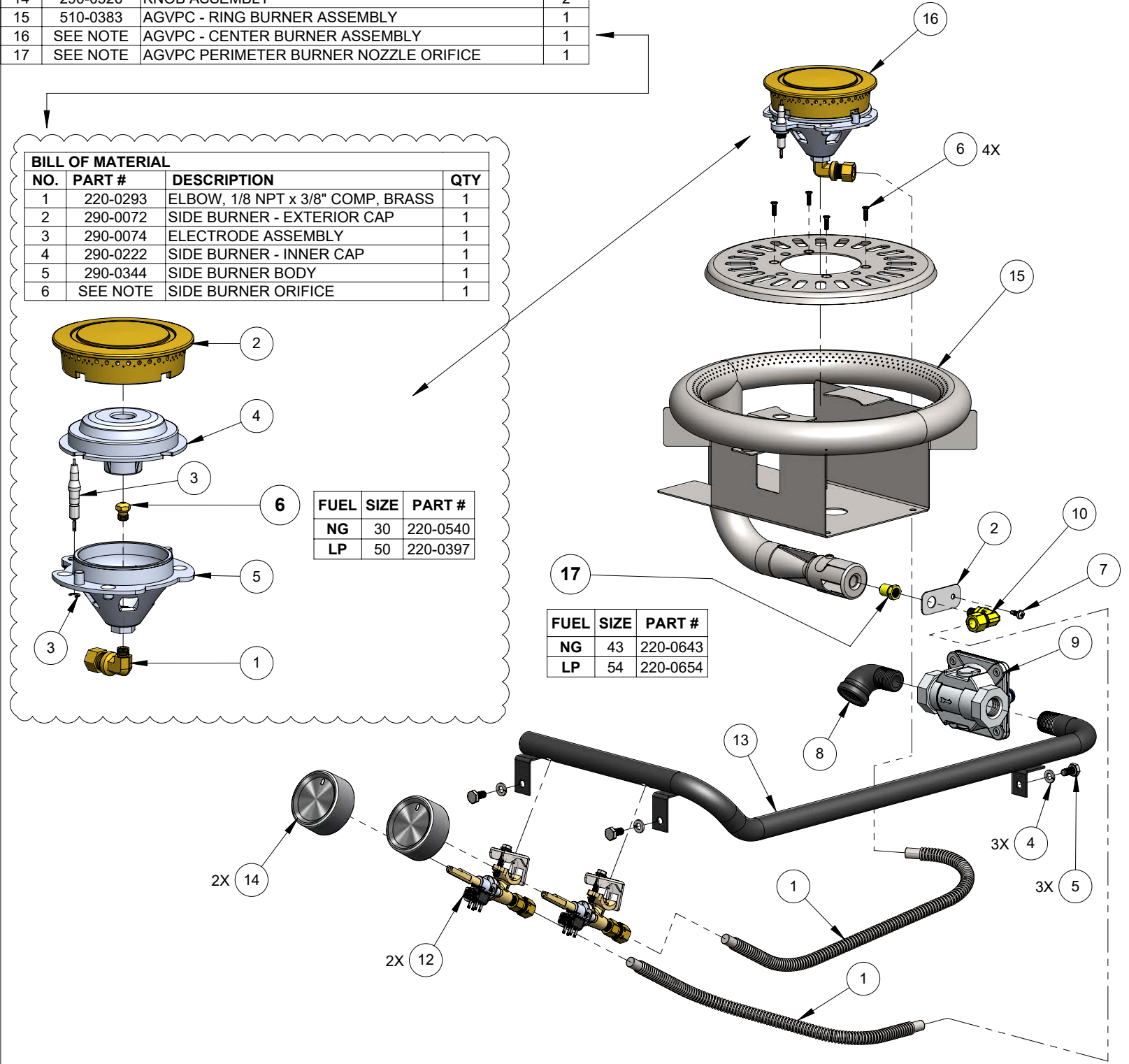
NO.	PART #	DESCRIPTION	QTY
1	100-0967	GAS LINE 3/8 X 16 - FLEX - SS	2
2	100-1067	SMOKER & SZ™ ORIFICE BRACKET	1
3	100-1478	TOP DECK BURNER CAP	1
4	200-0087	WASHER, 1/4" - SPRING LOCK - SS	3
5	200-0089	BOLT - HEX HEAD 1/4-20 x 1/2" L	3
6	200-0098	SCREW 6-32 X 1/2" - FLAT HEAD 82° - PHILIPS	4
7	200-0111	SCREW, SMS, 8-18 X 1/2", PH, PAN, TEK, 410 SS	1
8	200-0274	ELBOW, STREET, 1/2" NPT X 1/2" NPT-F, BLACK IRON	1
9	220-0280	REGULATOR GAS - MAXITROL RV48CL440002, 5" w.c.	1
10	220-0293	ELBOW, 3/8-27 UNS x M6-.75 INT x 3/8" COMP., BRASS	1
11	220-0438	COUPLING, 1/8-27 NPT-Female X 3/8" COMP., BRASS	2
12	220-0510	GAS VALVE ASSEMBLY	2
13	220-0511	GAS MANIFOLD	1
14	290-0526	KNOB ASSEMBLY	2
15	510-0383	AGVPC - RING BURNER ASSEMBLY	1
16	SEE NOTE	AGVPC - CENTER BURNER ASSEMBLY	1
17	SEE NOTE	AGVPC PERIMETER BURNER NOZZLE ORIFICE	1

BILL OF MATERIAL

NO.	PART #	DESCRIPTION	QTY
1	220-0293	ELBOW, 1/8 NPT x 3/8" COMP, BRASS	1
2	290-0072	SIDE BURNER - EXTERIOR CAP	1
3	290-0074	ELECTRODE ASSEMBLY	1
4	290-0222	SIDE BURNER - INNER CAP	1
5	290-0344	SIDE BURNER BODY	1
6	SEE NOTE	SIDE BURNER ORIFICE	1

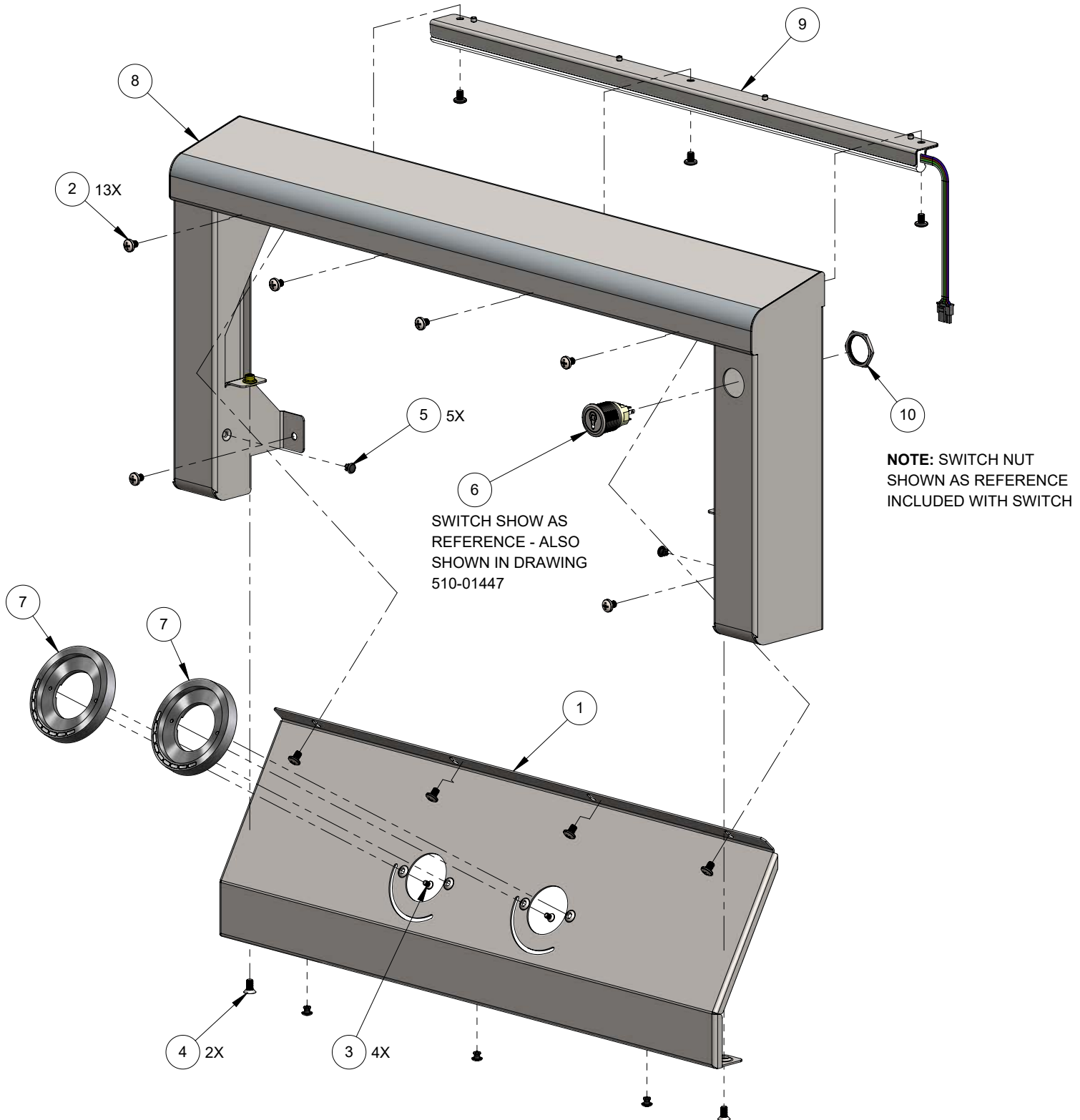
FUEL	SIZE	PART #
NG	30	220-0540
LP	50	220-0397

FUEL	SIZE	PART #
NG	43	220-0643
LP	54	220-0654



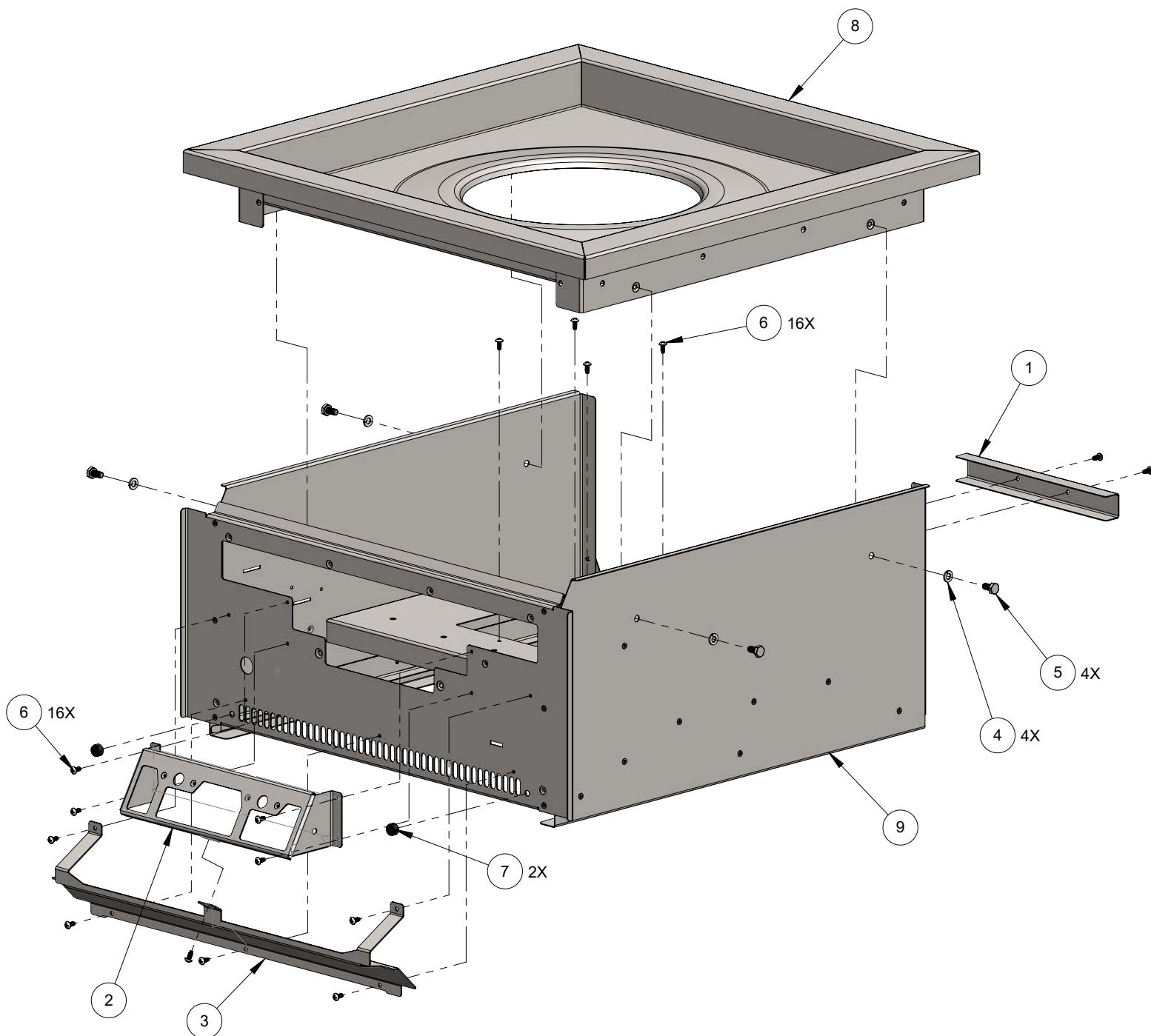
BILL OF MATERIAL

NO.	PART #	DESCRIPTION	QTY
1	100-3415	FRONT PANEL - CONTROL PANEL	1
2	200-0082	SCREW, MACH, 10-32 x 1/4", PH, PAN, SS	13
3	200-0425	SCREW 6-32 x 1/4"L - FLAT HEAD 82° UNDERCUT - PHILIPS	4
4	200-0436	SCREW, MACH, 10-32 X 3/8", PH, FLT, UNDERCUT, SS	2
5	200-0445	SNAP RIVET, Ø .161" MOUNT HOLE, NYLON 6, BLACK	5
6	210-0711	SWITCH - LIGHT - ON/OFF	1
7	290-0527	KNOB BEZEL ASSEMBLY	2
8	510-1442	FRONT PANEL WELDED PARTS	1
9	510-1446	FRONT PANEL LIGHT ASSEMBLY	1
10	SEE NOTE	SWITCH NUT (PROVIDED WITH SWITCH)	1



BILL OF MATERIAL

NO.	PART #	DESCRIPTION	QTY
1	100-2980	RING BURNER SUPPORT PLATE (B)	1
2	100-3405	ELECTRONICS BRACKET	1
3	100-3417	FRONT PANEL - WIRE COVER	1
4	200-0087	WASHER, 1/4" - SPRING LOCK - SS	4
5	200-0089	BOLT - HEX HEAD 1/4-20 x 1/2" L	4
6	200-0347	SCREW, SMS, 8-32 x 3/8", PH, PAN, TYPE F, 410 SS	16
7	290-0078	BUMPER 1/2"Ø X 1/4" PROJ. X 1/4" STEM	2
8	510-1145	TOP BODY ASSEMBLY	1
9	510-1444	BOTTOM BODY SUBASSEMBLY	1



BILL OF MATERIAL

NO.	PART #	DESCRIPTION	QTY
1	145-0611	FRONT, GREASE TRAY, AIPGV	1
2	145-0612	PAN, GREAY TRAY, AIPGV	1
3	200-0238	NUT, KEPS, #10-32 UNF, 304SS	2
4	200-0361	SCREW 8-32 X 5/8" - FLAT HEAD 82° - PHILLIPS	2
5	200-0465	NUT, CAGE, #8-32, ZN	2
6	200-0469	SCREW, MACH, 10-32 x 3/8", PH, PAN, SS	4
7	290-0489	ALFRESCO RANGE LOGO	1

