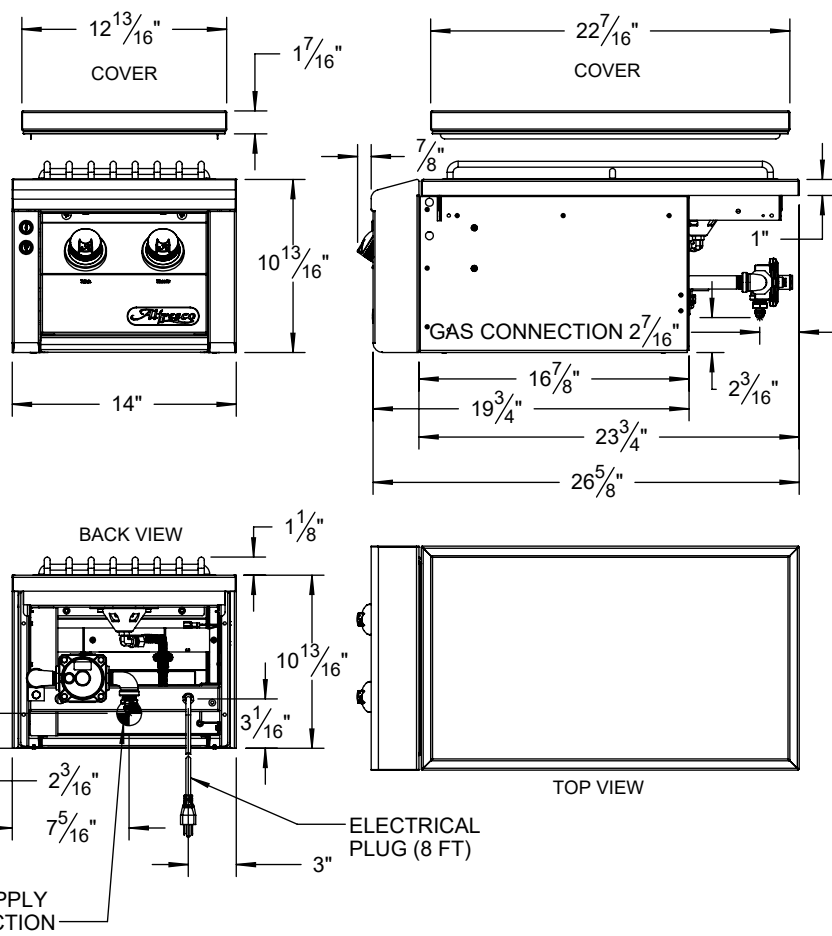
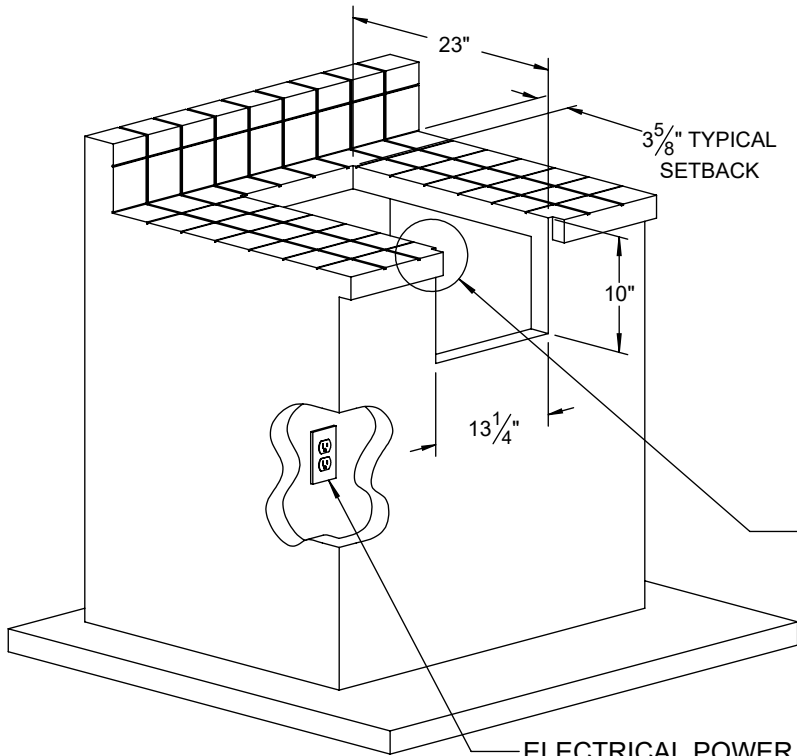


AXESB-2 TYPICAL INSTALLATION



COUNTERTOP CUTOUT REQUIREMENTS

NOTE: A GAS LINE IS REQUIRED INSIDE THE COUNTER FOR OPERATION FOR LP-GAS SETUP SEE NOTE AT RIGHT. IT IS RECOMMENDED THAT A FLEXIBLE HOSE IS USE FOR NG-GAS SETUPS 2³/₁₆" TO EASE INSTALLATIONS.



SPECIFICATIONS:

BTUH = 40,000
FUEL = NG @ 5" W.C. OR LP @ 10" W.C.
ELECTRICAL POWER = 115 VAC - 50/60 Hz. - 10 mA
GAS CONNECTION = 1/2" NPT (NG) OR 3/8" ODF (LP)

